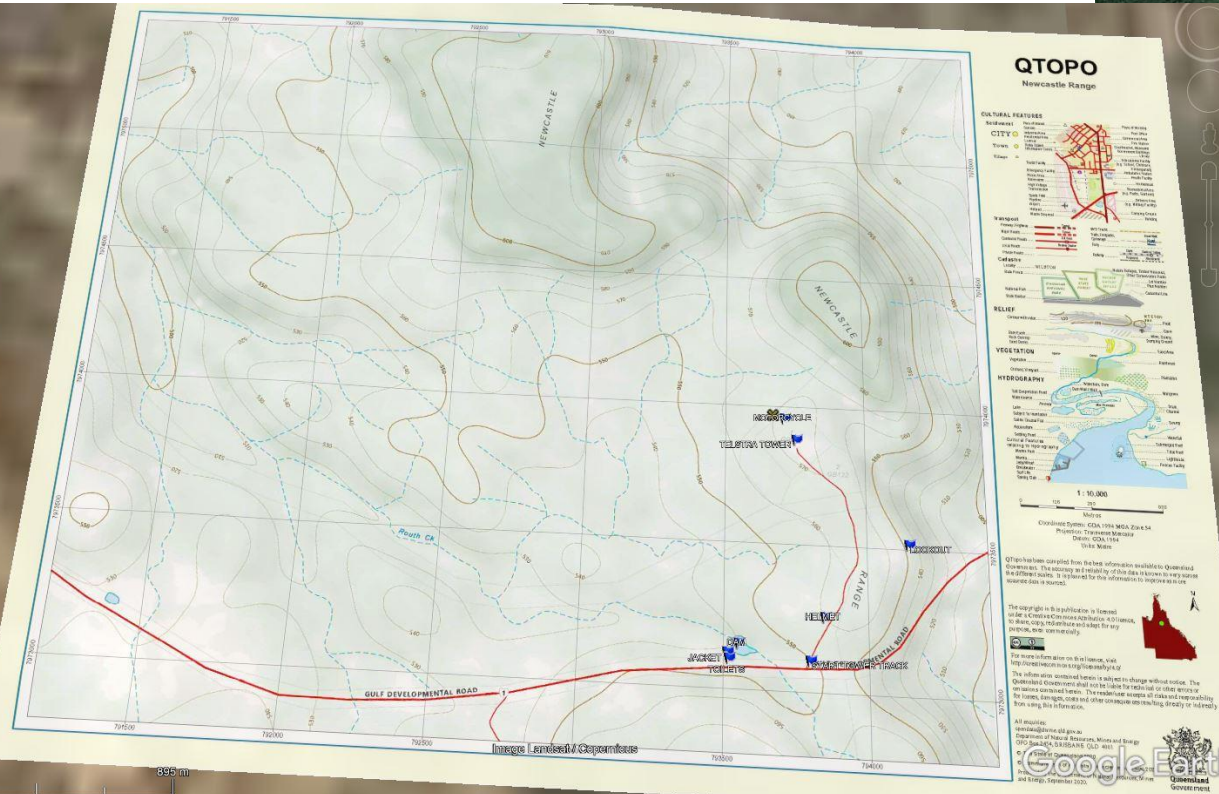
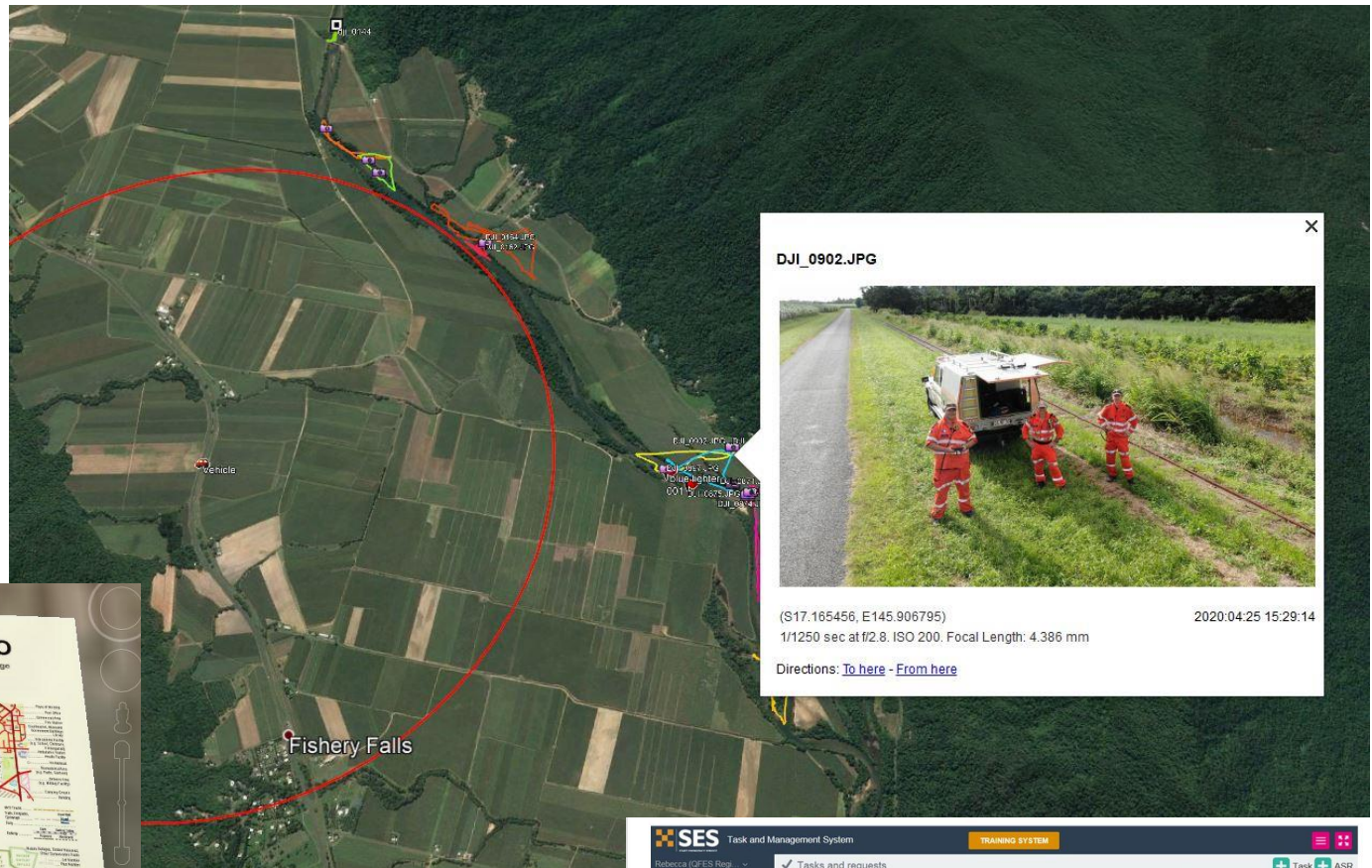
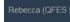


GIS in SES





Task and Management System

Rebecca (QFES Regi...)

- ✓ Tasks and requests
- Dashboard
- Team management
- User management
- Reporting
- Export


TRAINING SYSTEM

✓ Tasks and requests


🔍 Search
⌵ Filter
➡ Browse groups

Showing 57 tasks ✕ Clear filter

Received	Actions
24 SEP 13:30 OLD AGY 888-171 <small>Fair Northern • Eastern • Cairns Regional • Cairns</small> 5 SHEPHERD ST, CAIRNS CITY, 4870 QPS 3 Land search 📍 10	To be notified Agency support requested UNACCEPTED
09 SEP 20:51 OLD-JOO 861-672 <small>Fair Northern • Eastern • Cairns Regional • Cairns</small> A NORFOLK CCT, REDLYNCH, 4870 Residential ✓ Three or more (3+) Structure & Living areas 3 Dogs	Auto notified P3 ACCEPTED
25 AUG 13:28 OLD-JOO 861-384 <small>Fair Northern • Eastern • Cook Shire • Cookland</small> Lot 5, RURAL 123456 ENDERAVOUR VALLEY ROAD WEST, COOKTOWN VIA MARRON, 4895 Residential ✓ Camp (1) ⚠️ Flooded & Living areas 3 Other 3 Snakes & crocks in flood water	Monitoring TASKS P2 UNACCEPTED



esri | ESR, EARL, DeLorme, NGA, USGS





T.A.M.S

TASK AND MANAGEMENT SYSTEM

Overview

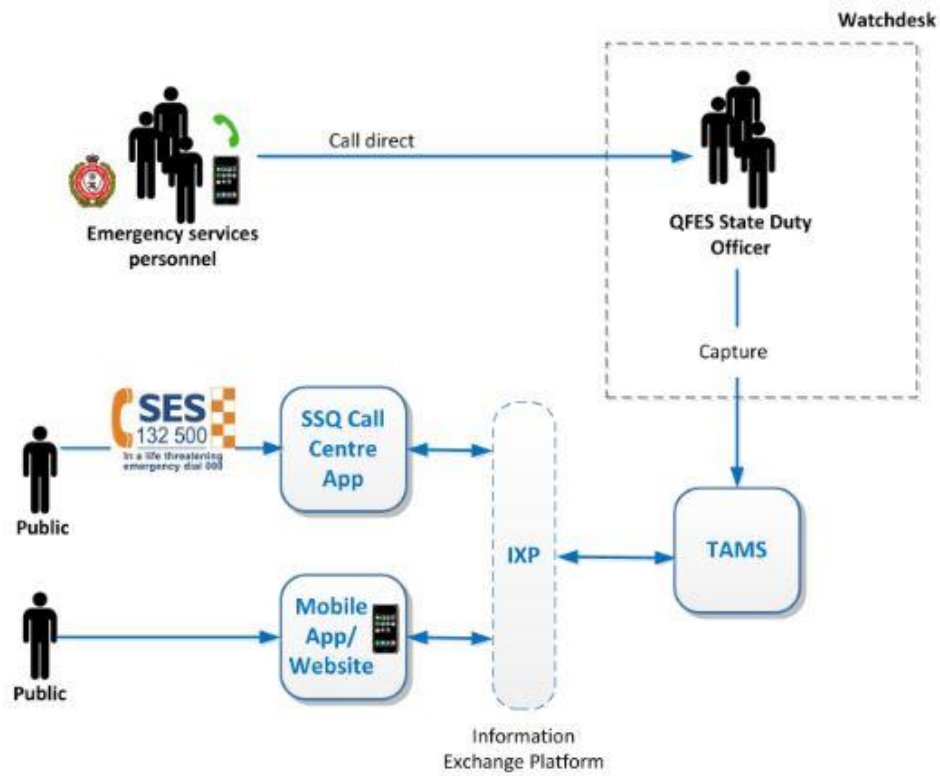


Figure 1 External sources of tasks and requests

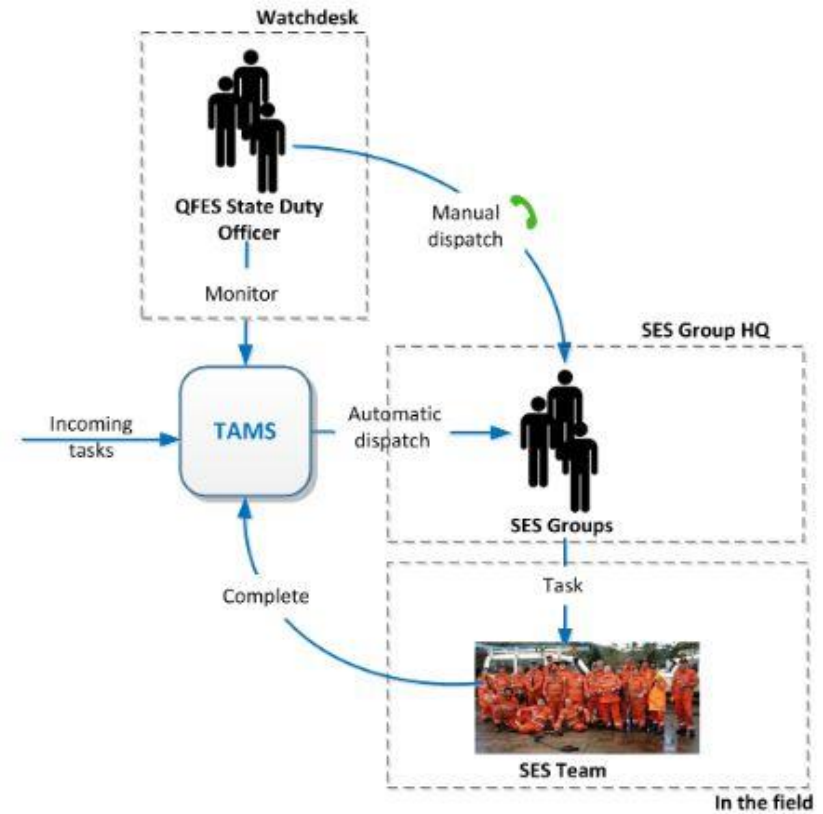



Figure 2 Monitoring, dispatch and closure of tasks

TAMS

 **SES**
STATE EMERGENCY SERVICE

Task and Management System

Rebecca (QFES Regi... >

Tasks and requests

Dashboard

Team management

User management

Reporting

Export

V.1.00.77782

Tasks and requests

SearchFilterBrowse groups

Showing 57 Tasks

Received

Actions

24 SEP 13:30

QLD-AGY-000-171
Far Northern > Eastern > Cairns Regional > Cairns
5 SHERIDAN ST, CAIRNS CITY, 4870
QPS Land search
10

To be notified
Agency support request
UNACCEPTED

09 SEP 20:31

QLD-JOO-001-672
Far Northern > Eastern > Cairns Regional > Cairns
4 NORFOLK CCT, REDLYNCH, 4870
Residential Three or more (3+) Structural Living areas Dogs

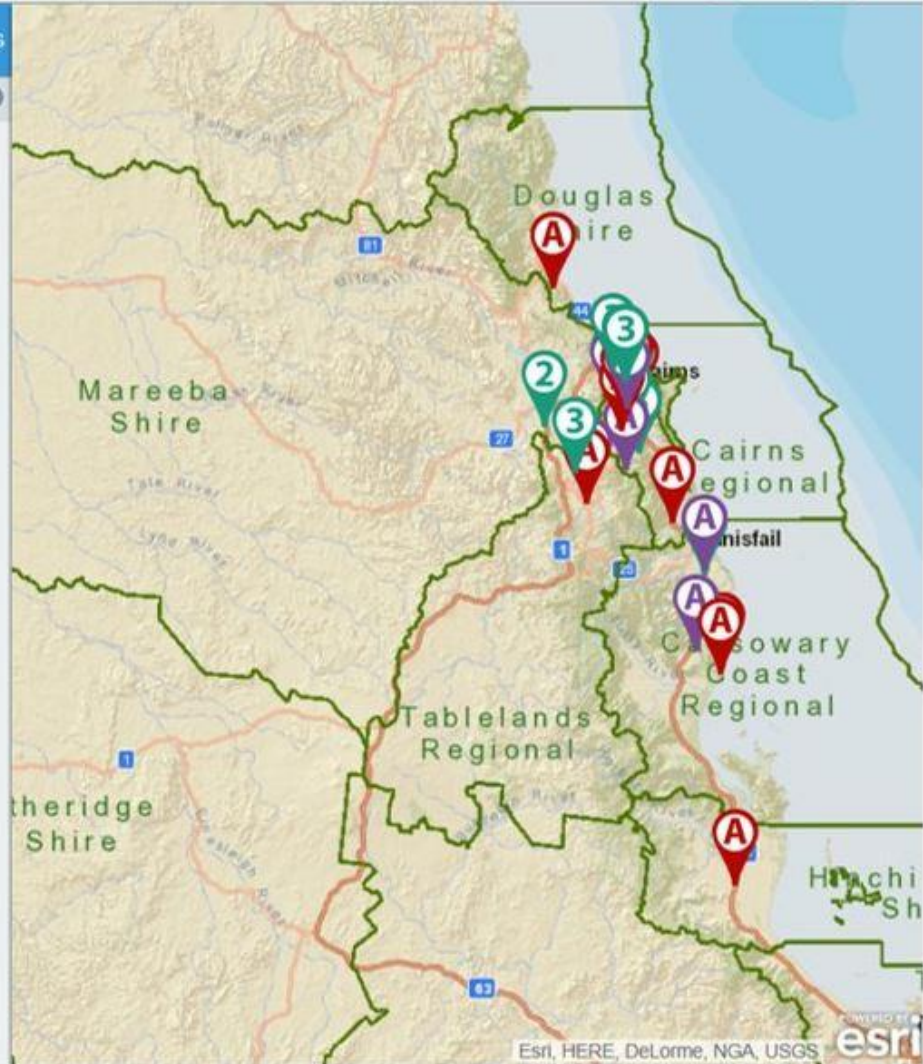
Autonotified
P3
ACCEPTED

25 AUG 13:28

QLD-JOO-001-384
Far Northern > Eastern > Cook Shire > Cooktown
Lot 5, RURAL 123456 ENDEAVOUR VALLEY ROAD WEST, COOKTOWN VIA MARTON, 4895
Residential One (1) Flooded Living areas Other Snakes & crocks in flood water

Monitoring TAMS
P2
UNACCEPTED

TaskASR



Esri, HERE, DeLorme, NGA, USGS



Agency support request details

ID: QLD-AGY-005-529

Source: TAMS

Status: Completed, Notified

Created by Robbie Saye (QFES SDCC) on 19-09-2020 11:32hrs (2 days ago)

Days

- 0

Hours

- 0

Minutes

- 0

Scheduled finish

Date

dd-mm-yyyy

Time

Select time

Map



View on map with other tasks

Tasking information

Completed

Group allocation

Allocated to:

Group

Far Northern > Central > Cook Shire > Lakeland

Notification Status

Notified

Status

Accepted

From: 01-07-2019 00:00 To: 19-11-2020 04:41

TASK STATUSES

(Total: 212)

UNALLOCATED



UNACCEPTED



ACCEPTED



TASKED



CANCELLED/REJECTED



COMPLETED



ASR STATUSES

(Total: 263)

UNALLOCATED



UNACCEPTED



ACCEPTED



TASKED



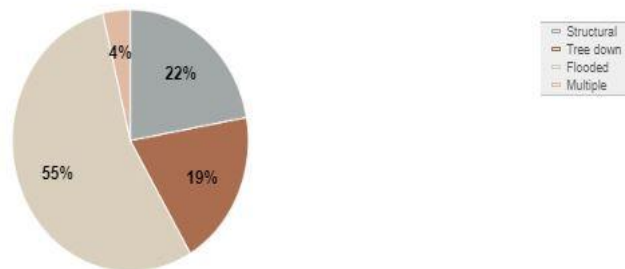
CANCELLED



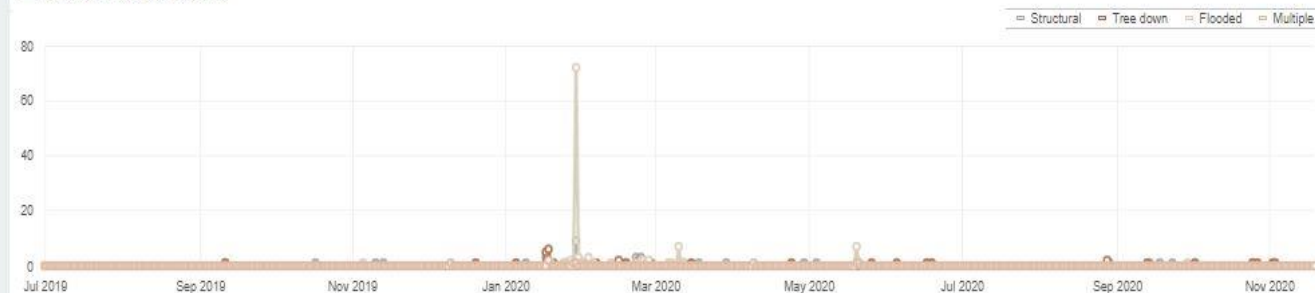
COMPLETED



Breakdown by nature of damage



Nature of damage over time



Top 1 LGAs

LGA	Tasks received
Ipswich City	2616

Age of jobs not completed

There are no results to be displayed

Priority of jobs not completed

There are no results to be displayed

TOM- Total Operational Mapping

 TOM - Operational Mapping

Search...



Far Northern > Northern > Cairns Re...

I want to...

Details

OBJECTID
272

SHAPE
N/A

Title
QLD-AGY-005-591 - Completed

Summary
Allocated to: Far Northern > Northern > Cairns
Regional > Babinda - Far Northern > Northern >
Cairns Regional > Cairns - Far Northern > Northern
> Cairns Regional > Edmonton Requesting agency:
QAS Request type: Patient retrieval Nu

PublishedDate
Sep 27, 2020 11:33 AM

LastUpdate
Sep 27, 2020 7:36 PM

Id
QLD-AGY-005-591

tams_DateCreated
Sep 27, 2020 11:33 AM

tams_Priority
N/A

tams_PropertyType
N/A

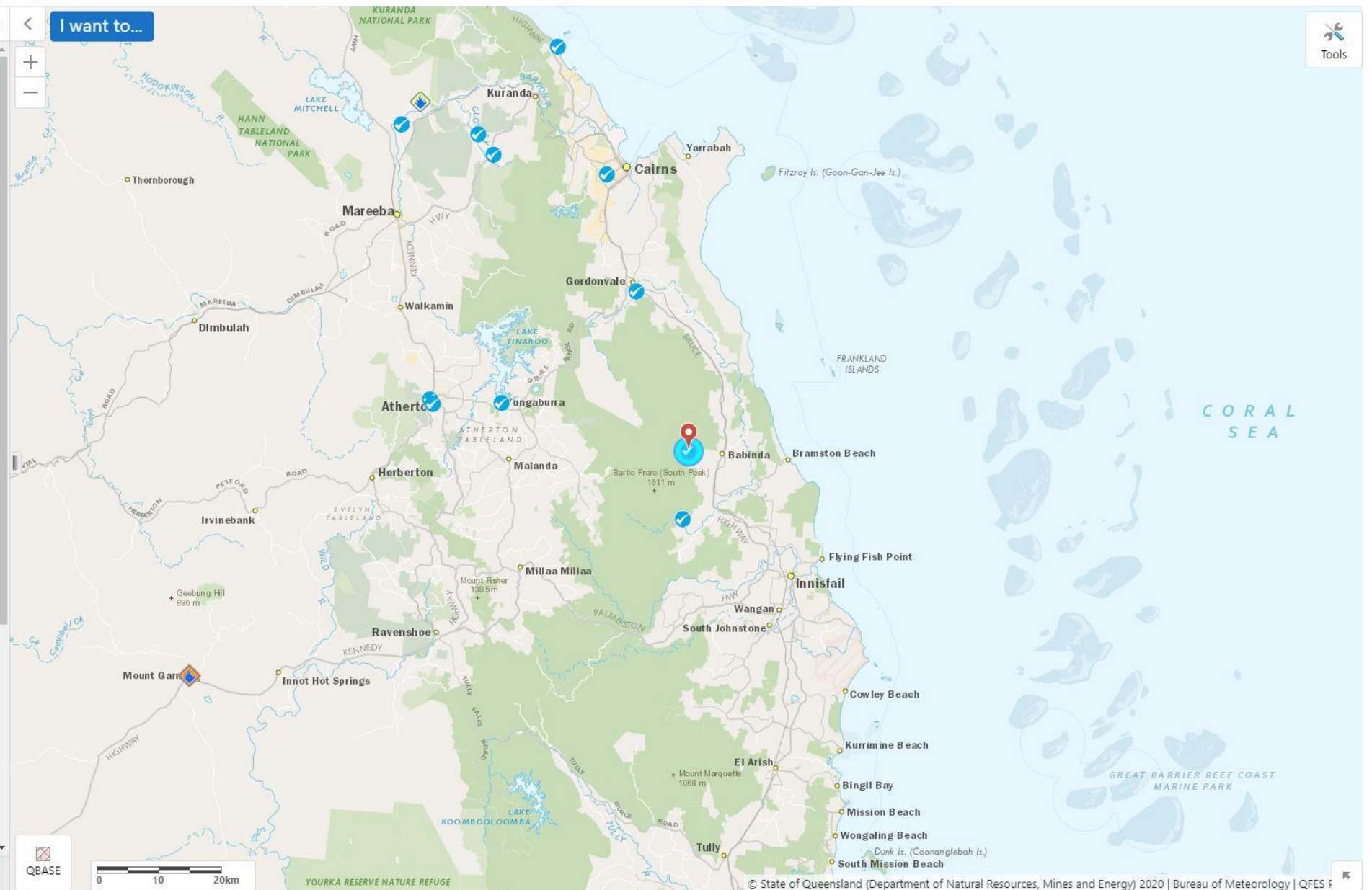
tams_RFAAddress
, THE BOULDERS ROAD, BABINDA, 4861

tams_RFANumber
QLD-AGY-005-591

tams_RFAStatus
Completed

tams_RFAType
Patient retrieval

tams_SESName
Far Northern > Northern > Cairns Regional >
Babinda - Far Northern > Northern > Cairns
Regional > Cairns - Far Northern > Northern >



Tools



Welcome to a ...



Layers



Far Northern > ...



QBASE



0 10 20km

Home
 Initial View
 Full Extent
 Bookmarks
 Previous Extent
 Next Extent

Identify
 Print
 Export
 Share

Calculate Service Area
Service Area
 Display Radio Coverage
Radio Coverage

Find Data

Tasks

Far Northern > Northern > Cairns Re... ×

I want to...

Details

OBJECTID
34

SHAPE
N/A

Title
QLD-SES-045-655 - Completed

Summary
Allocated to: Far Northern > Northern > Cairns
Regional > Cairns Nature of damage: Structural
Priority: 3 Property type: Residential

PublishedDate
Sep 18, 2020 9:33 AM

LastUpdate
Sep 18, 2020 8:21 PM

Id
QLD-SES-045-655

tams_DateCreated
Sep 18, 2020 9:33 AM

tams_Priority
3

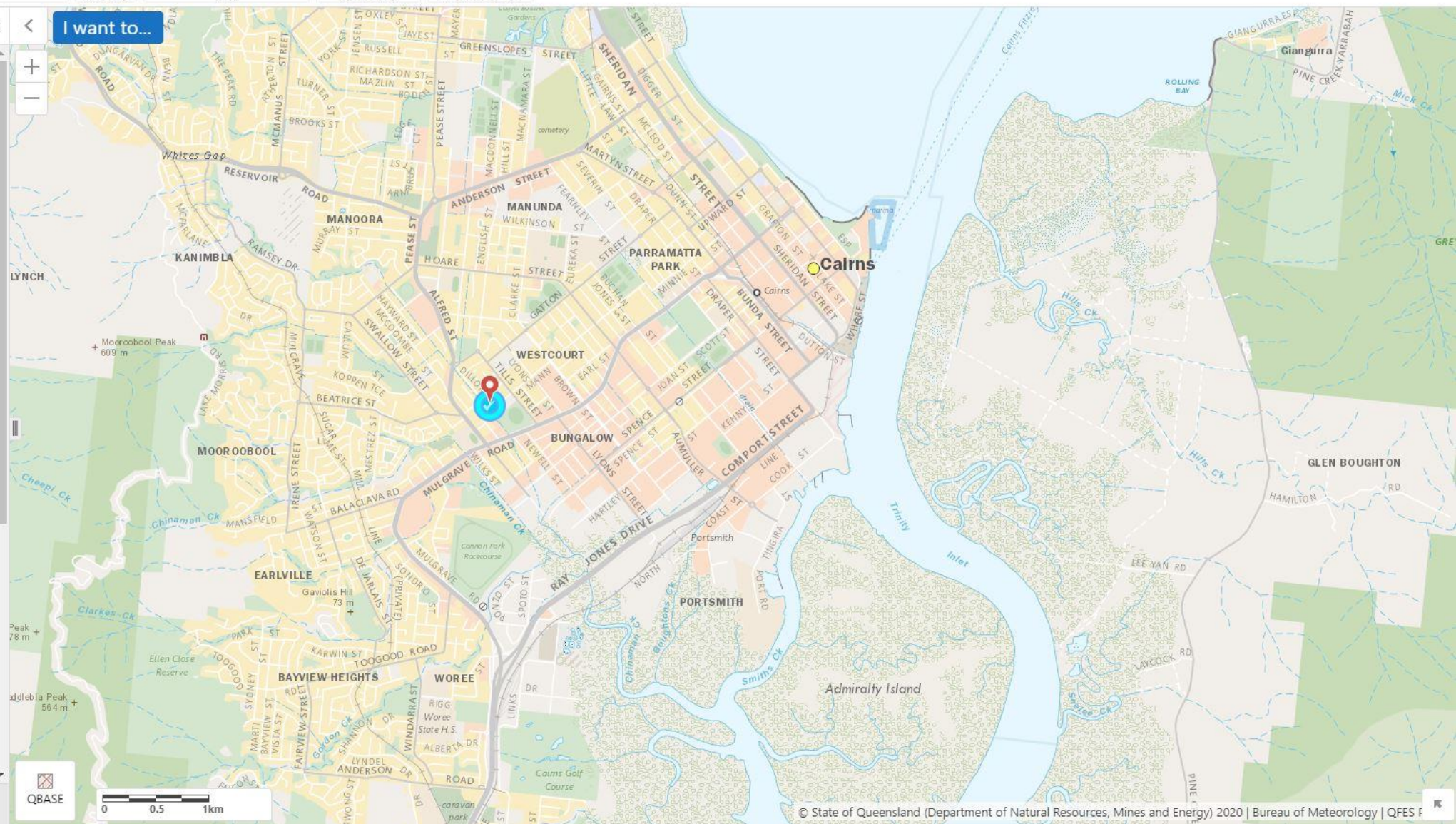
tams_PropertyType
Residential


tams_RFAAddress
104, DILLON STREET, WESTCOURT, 4870


tams_RFANumber
QLD-SES-045-655


tams_RFAStatus
Completed


tams_RFAType




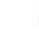
 Home


 Initial View


 Full Extent


 Bookmarks


 Previous Extent


 Next Extent


 Navigation


 Identify

 Print

 Export

 Share

 Calculate Service Area

 Display Radio Coverage

Find Data

Tasks

Service Area

Radio Coverage

Far Northern > Northern > Cairns Re...     I want to...

Details

OBJECTID
34

SHAPE
N/A

Title
QLD-SES-045-655 - Completed

Summary
Allocated to: Far Northern > Northern > Cairns Regional > Cairns Nature of damage: Structural Priority: 3 Property type: Residential

PublishedDate
Sep 18, 2020 9:33 AM

LastUpdate
Sep 18, 2020 8:21 PM

Id
QLD-SES-045-655

tams_DateCreated
Sep 18, 2020 9:33 AM

tams_Priority
3

tams_PropertyType
Residential

tams_RFAAddress
104, DILLON STREET, WESTCOURT, 4870

tams_RFANumber
QLD-SES-045-655

tams_RFAStatus
Completed

tams_RFAType



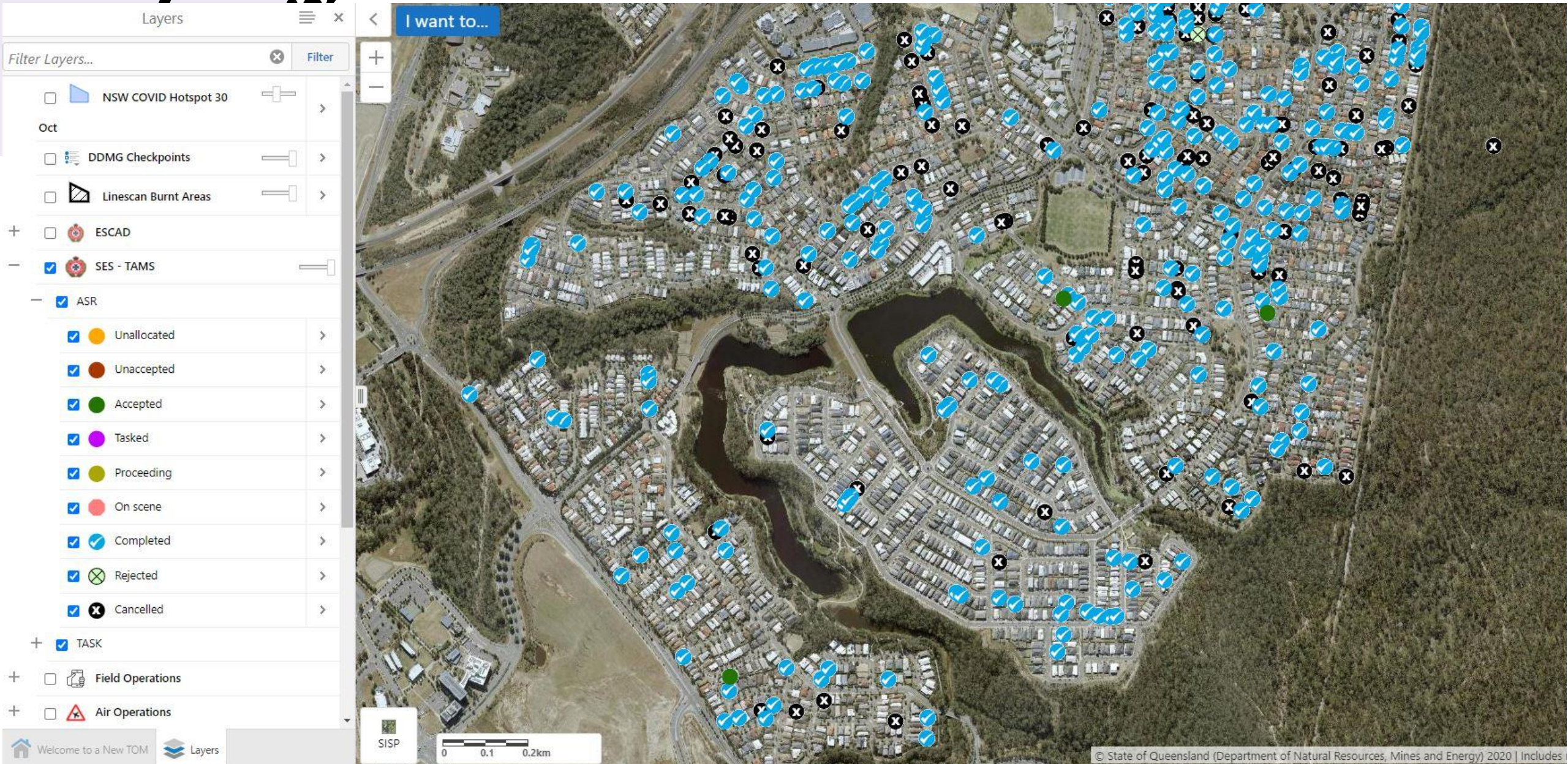
 

 SISP

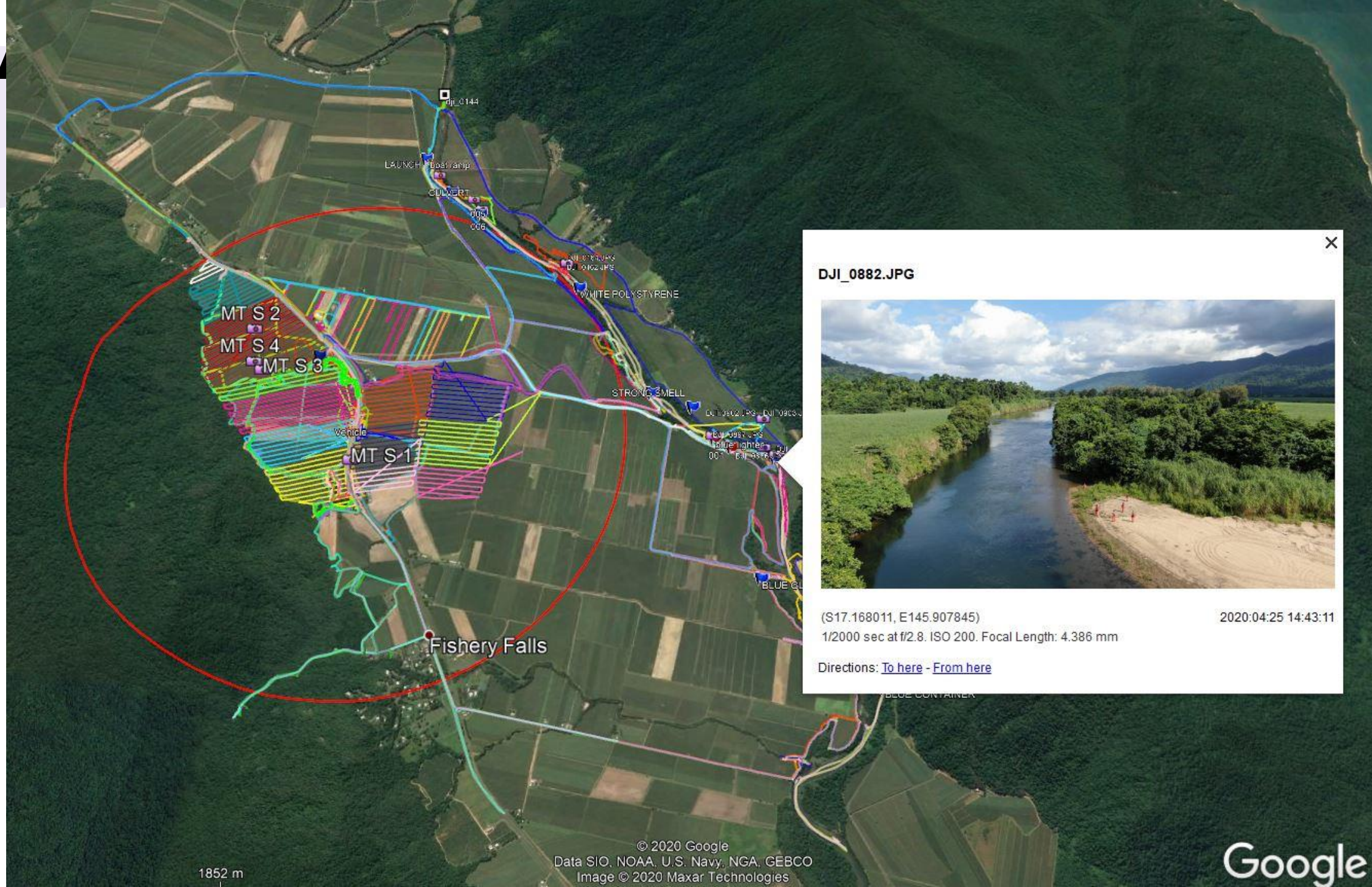
 0 15 30m

© State of Queensland (Department of Natural Resources, Mines and Energy) 2020 | Includes material © State of Q

Springfield Lakes



Search



DJI_0882.JPG

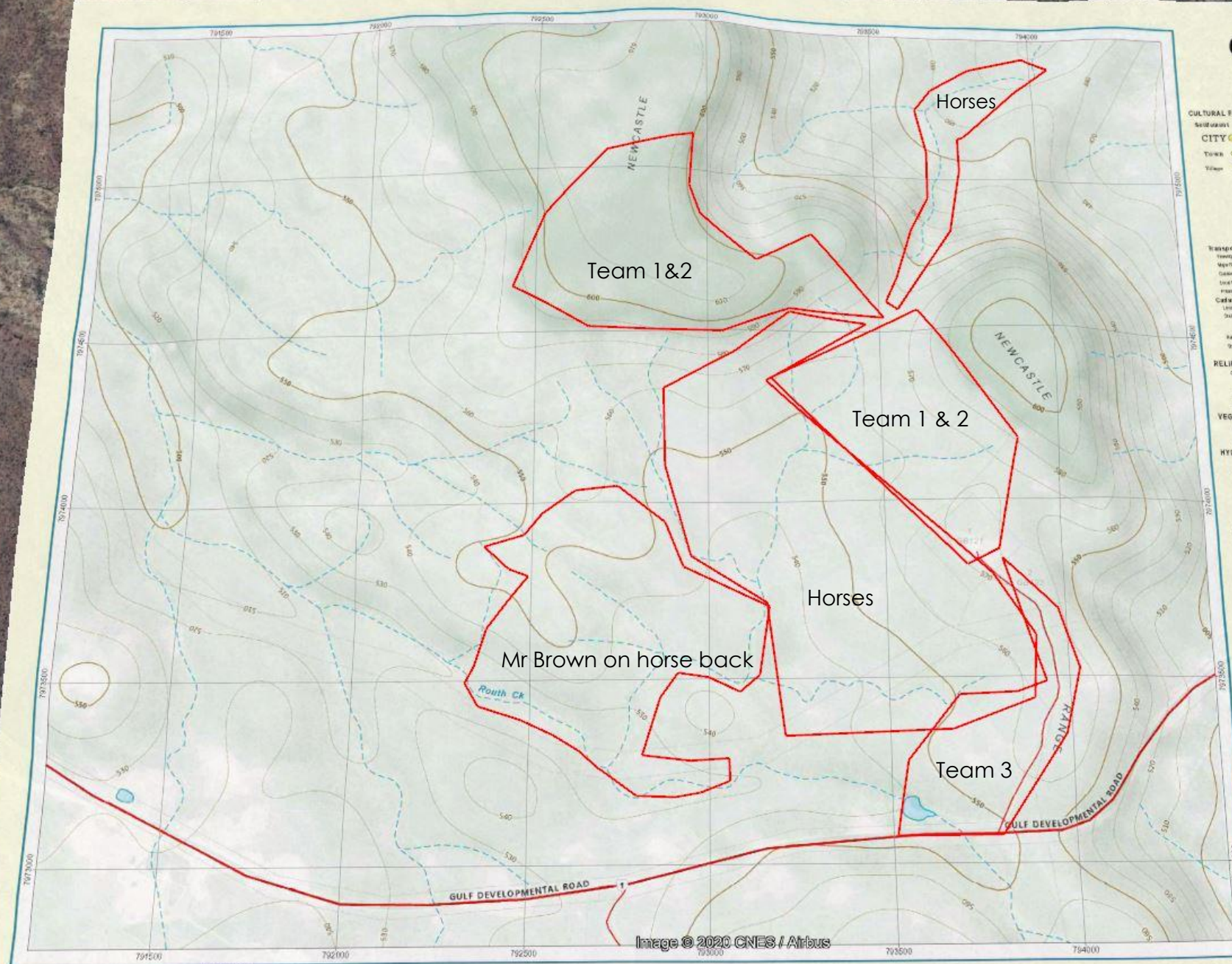


(S17.168011, E145.907845)

2020:04:25 14:43:11

1/2000 sec at f/2.8. ISO 200. Focal Length: 4.386 mm

Directions: [To here](#) - [From here](#)



QTOPO

Newcastle Range

CULTURAL FEATURES

Settlements

City

Town

Village

Isolated

Isolated

Isolated

Isolated

Isolated

Isolated

Isolated

Isolated

Isolated

Isolated

Isolated

Isolated

Isolated

Isolated

Isolated

Isolated

Isolated

Isolated

Isolated

Isolated

Isolated

Isolated

Isolated

Isolated

Isolated

Isolated

Isolated

Isolated

Isolated

Isolated

Isolated

Isolated

Isolated

Isolated

Isolated

Isolated

Isolated

Isolated

Isolated

Isolated

Isolated

Isolated

Isolated

Isolated

Isolated

Isolated

Isolated

Isolated

Isolated

Isolated

Isolated

Isolated

Isolated

Isolated

Isolated

Isolated

Isolated

Isolated

Isolated

Isolated

Isolated

Isolated

Isolated

Isolated

Isolated

Isolated

Isolated

Isolated

Isolated

Isolated

Isolated

Isolated

Isolated

Isolated



Transport

Trunk Road

Major Road

Minor Road

Footpath

Canal

Drainage

Watercourse

Stream

River

Lake

Swamp

Wetland

Marsh

Reef

Shoal

Bank

Island

Peninsula

Point

Headland

Bay

Harbour

Strait

Channel

Passage

Bay

Harbour

Strait

Channel

Passage

Bay

Harbour

Strait

Channel

Passage

Bay

Harbour

Strait

Channel

Passage

Bay

Harbour

Strait

Channel

Passage

Bay

Harbour

Strait

Channel

Passage

Bay

Harbour

Strait

Channel

Passage

Bay

Harbour

Strait

Channel

Passage

Bay

Harbour

Strait

Channel

Passage

Bay

Harbour

Strait

Channel

Passage

Bay

Harbour

Strait

Channel

Passage

Bay

Harbour

Strait

Channel

Passage

Bay

Harbour

Strait

Channel

Passage

Bay

Harbour

Strait

Channel

Passage

Bay

Harbour

Strait

Channel

Passage

Bay

Harbour

Strait

Channel

Passage

Bay

Harbour

Strait

Channel

Passage

Bay

Harbour

Strait

Channel

Passage

Bay

Harbour

Strait

Channel

Passage

Bay

Harbour

Strait

Channel

Passage

Bay

Harbour

Strait

Channel

Passage

Bay

Harbour

Strait

Channel

Passage

Bay

Harbour

Strait

Channel

Passage

Bay

Harbour

Strait

Channel

Passage

Bay

Harbour

Strait

Channel

Passage

Bay

Harbour

Strait

Channel

Passage

Bay

Harbour

Strait

Channel

Passage

Bay

Harbour

Strait

Channel

Passage

Bay

Harbour

Strait

Channel

Passage

Bay

Harbour

Strait

Channel

Passage

Bay

Harbour

Strait

Channel

Passage

Bay

Harbour

Strait

Channel

Passage

Bay

Harbour

Strait

Channel

Passage

Bay

Harbour

Strait

Channel

Passage

Bay

Harbour

Strait

Channel

Passage

Bay

Harbour

Strait

Channel

Passage

Bay

Harbour

Strait

Channel

Passage

Bay

Harbour

Strait

Channel

Passage

Bay

Harbour

Strait

Channel

Passage

Bay

Harbour

Strait

Channel

Passage

Bay

Harbour

mark team 2

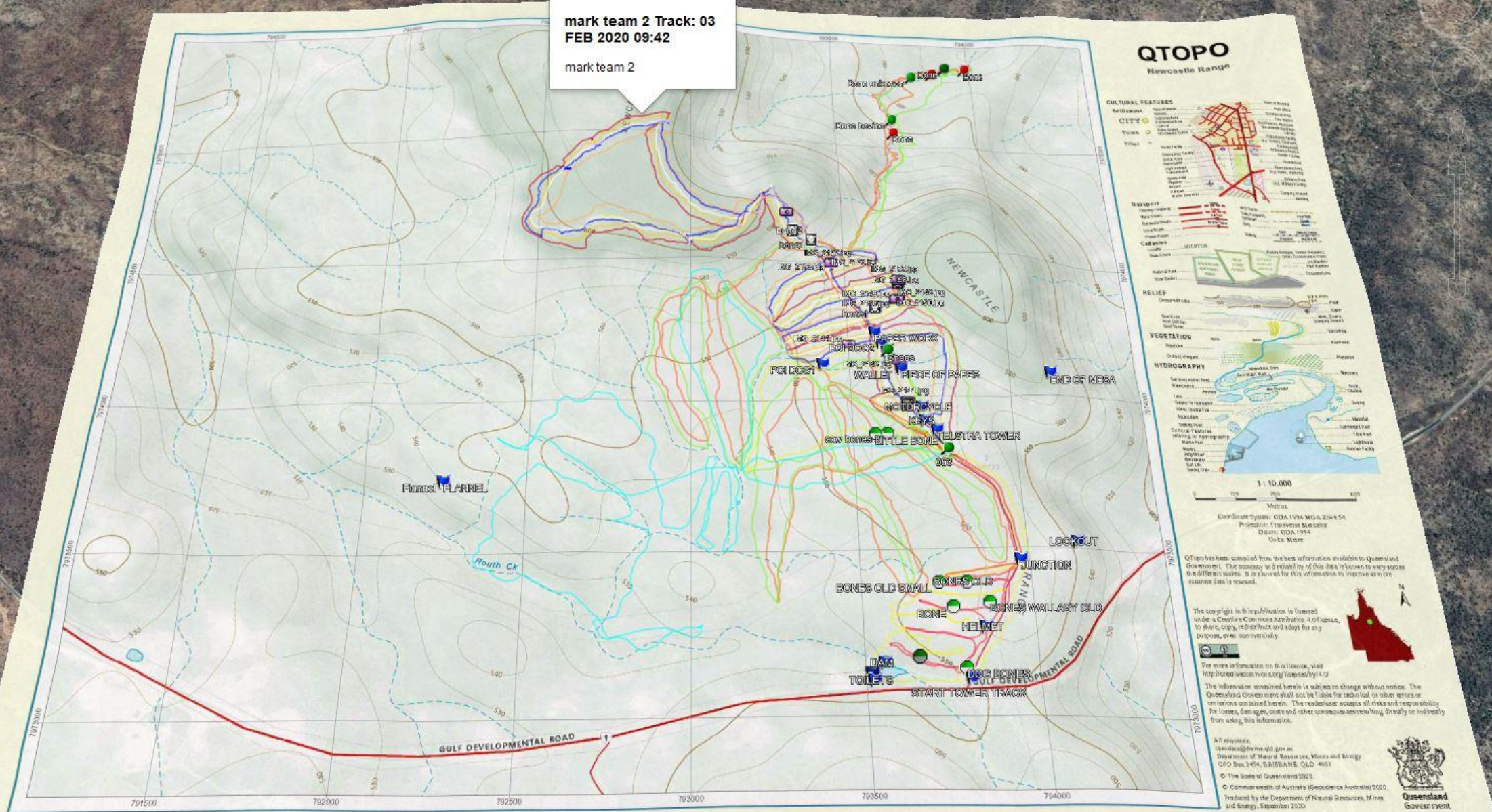
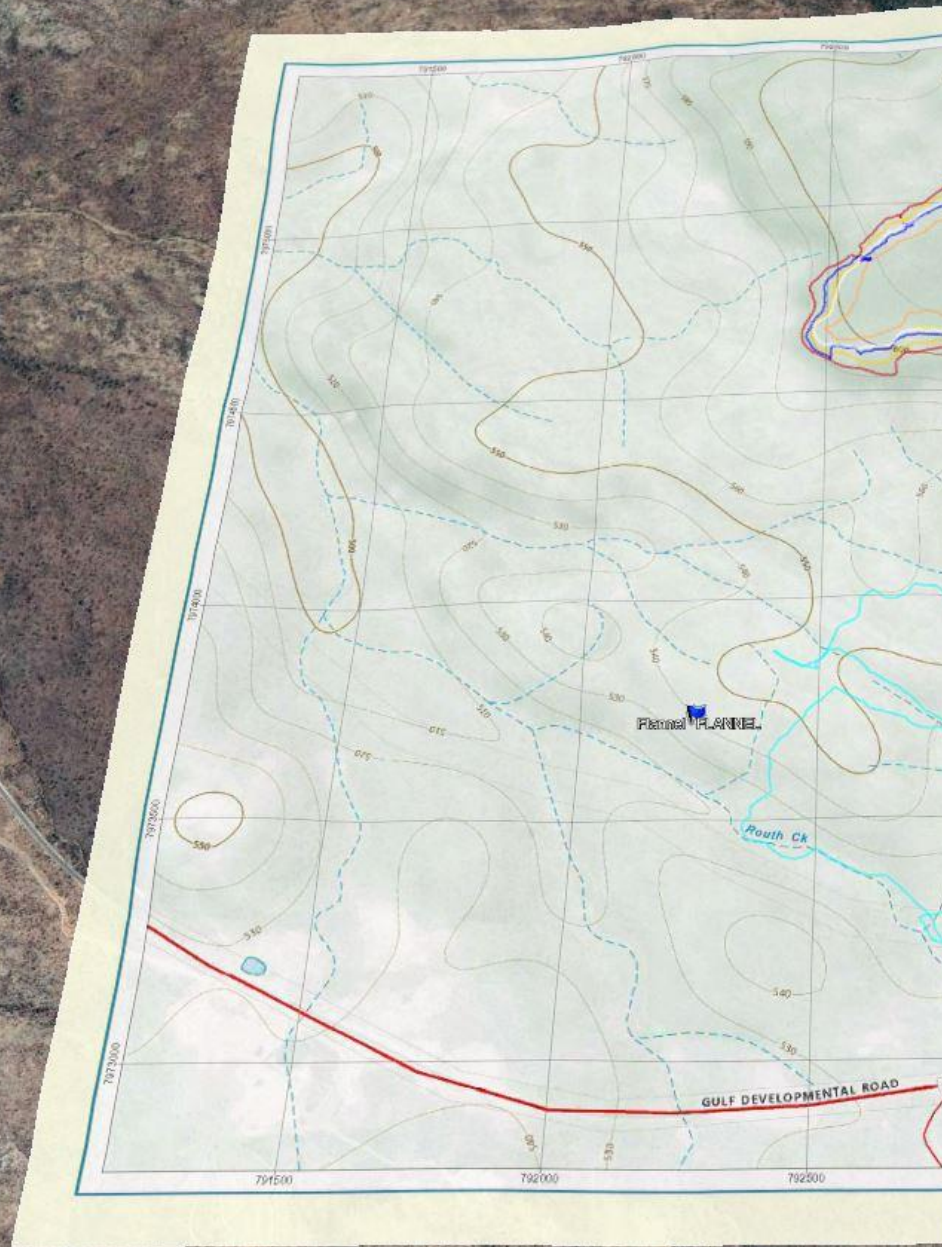


Image © 2020 CNES / Airbus

Google Earth



IMG_2146.jpg



(S18.300628, E143.777847)

2020:02:03 13:32:44

1/2033 sec at f/1.8. ISO 25. Focal Length: 4.25 mm

Directions: [To here](#) - [From here](#)

QTOPO Newcastle Range

CULTURAL FEATURES

CITY

Town

Water

Other

Legend

Scale

Notes

Disclaimer

Copyright

License

Attribution

Version

History

Metadata

Download

Print

Share

Feedback

Help

Privacy

Terms

Contact

FAQ

Support

Partners

Links

Images

Videos

Documents

Maps

Tools

API

Mobile

Desktop

Web

API

Mobile

Desktop

Web

API

Mobile

Desktop

Web

API

Mobile

Desktop

Web

API

Mobile

Desktop

Web

API

Mobile

Desktop

Web

API

Mobile

Desktop

Web

API

Mobile

Desktop

Web

API

Mobile

Desktop

Web

API

Mobile

Desktop

Web

API

Mobile

Desktop

Web

API

Mobile

Desktop

Web

API

Mobile

Desktop

Web

API

Mobile

Desktop

Web

API

Mobile

Desktop

Web

API

Mobile

Desktop

Web

API

Mobile

Desktop

Web

API

Mobile

Desktop

Web

API

Mobile

Desktop

Web

API

Mobile

Desktop

Web

API

Mobile

Desktop

Web

API

Mobile

Desktop

Web

API

Mobile

Desktop

Web

API

Mobile

Desktop

Web

API

Mobile

Desktop

Web

API

Mobile

Desktop

Web

API

Mobile

Desktop

Web

API

Mobile

Desktop

Web

API

Mobile

Desktop

Web

API

Mobile

Desktop

Web

API

Mobile

Desktop

Web

API

Mobile

Desktop

Web

API

Mobile

Desktop

Web

API

Mobile

Desktop

Web

API

Mobile

Desktop

Web

API

Mobile

Desktop

Web

API

Mobile

Desktop

Web

API

Mobile

Desktop

Web

API

Mobile

Desktop

Web

API

Mobile

Desktop

Web

API

Mobile

Desktop

Web

API

Mobile

Desktop

Web

API

Mobile

Desktop

Web

API

Mobile

Desktop

Web

API

Mobile

Desktop

Web

API

Mobile

Desktop

Web

API

Mobile

Desktop

Web

API

Mobile

Desktop

Web

API

Mobile

Desktop

Web

API

Mobile

Desktop

Web

API

Mobile

Desktop

Web

API

Mobile

Desktop

Web

API

Mobile

Desktop

Web

API

Mobile

Desktop

Web

API

Mobile

Desktop

Web

API

Mobile

Desktop

Web

API

Mobile

Desktop

Web

API

Mobile

Desktop

Web

API

Mobile

Desktop

Web

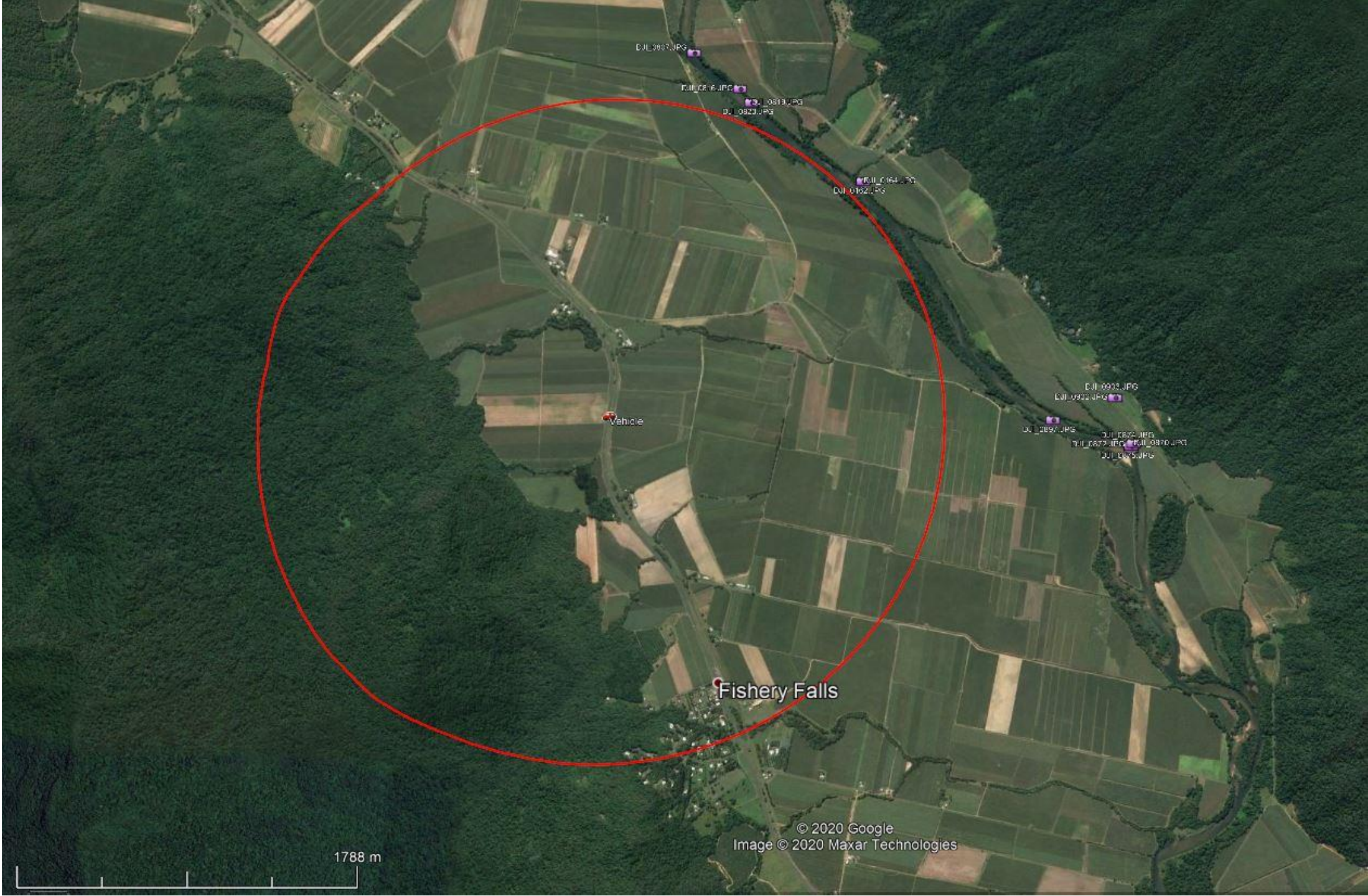
API

Mobile

Desktop

Web

API



DJI_0007.JPG

DJI_0016.JPG

DJI_0013.JPG

DJI_0023.JPG

DJI_0164.JPG
DJI_0162.JPG

DJI_0035.JPG
DJI_0032.JPG

DJI_0057.JPG

DJI_0072.JPG
DJI_0073.JPG
DJI_0070.JPG
DJI_0075.JPG

Vehicle

Fishery Falls

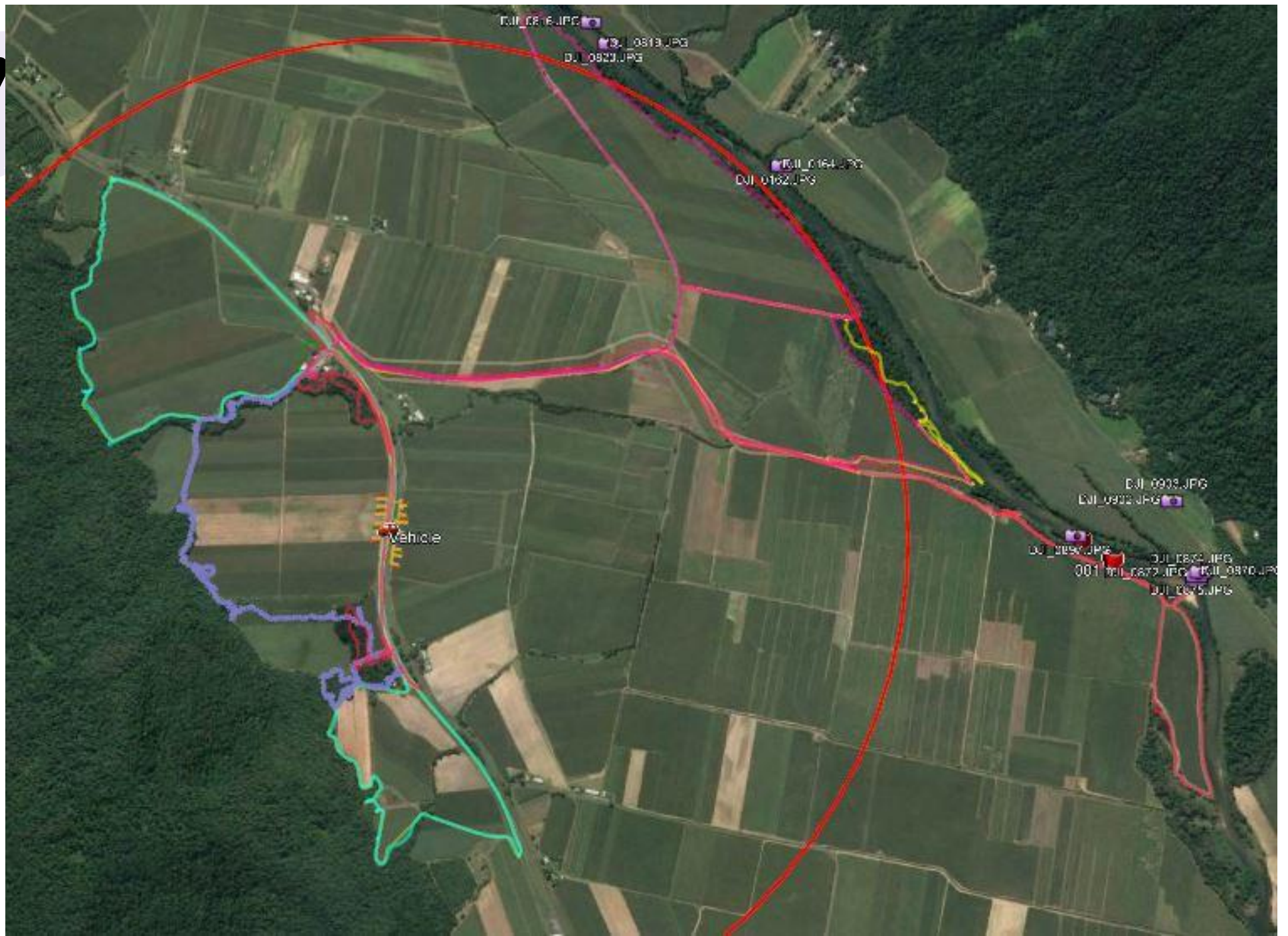
1788 m

© 2020 Google
Image © 2020 Maxar Technologies

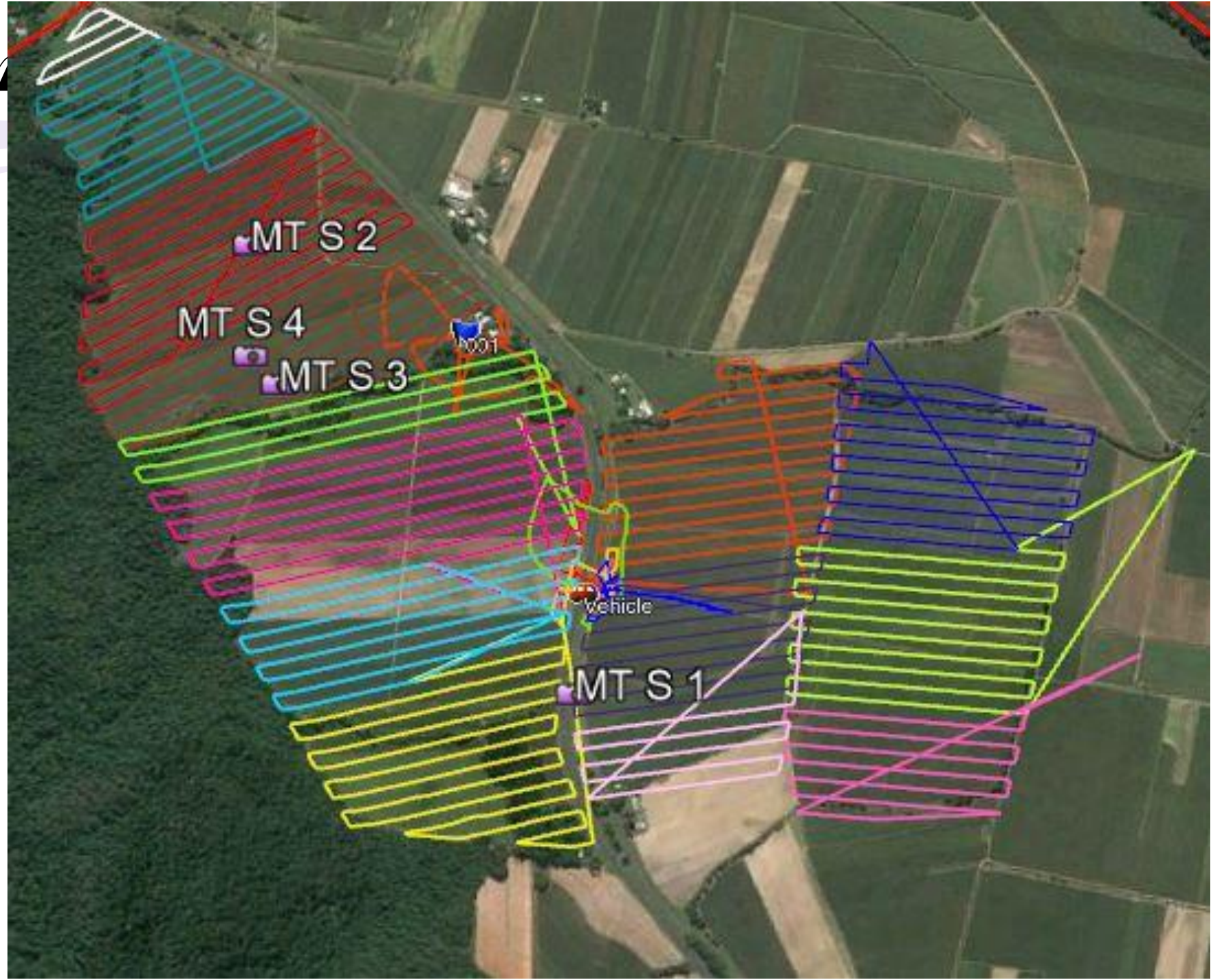
Day 1 am tracks



Day 1 pre tracks



Day 1 drop tracks





MT S 1



Directions: [To here](#) - [From here](#)



MT S 2
MT S 4
MT S 3

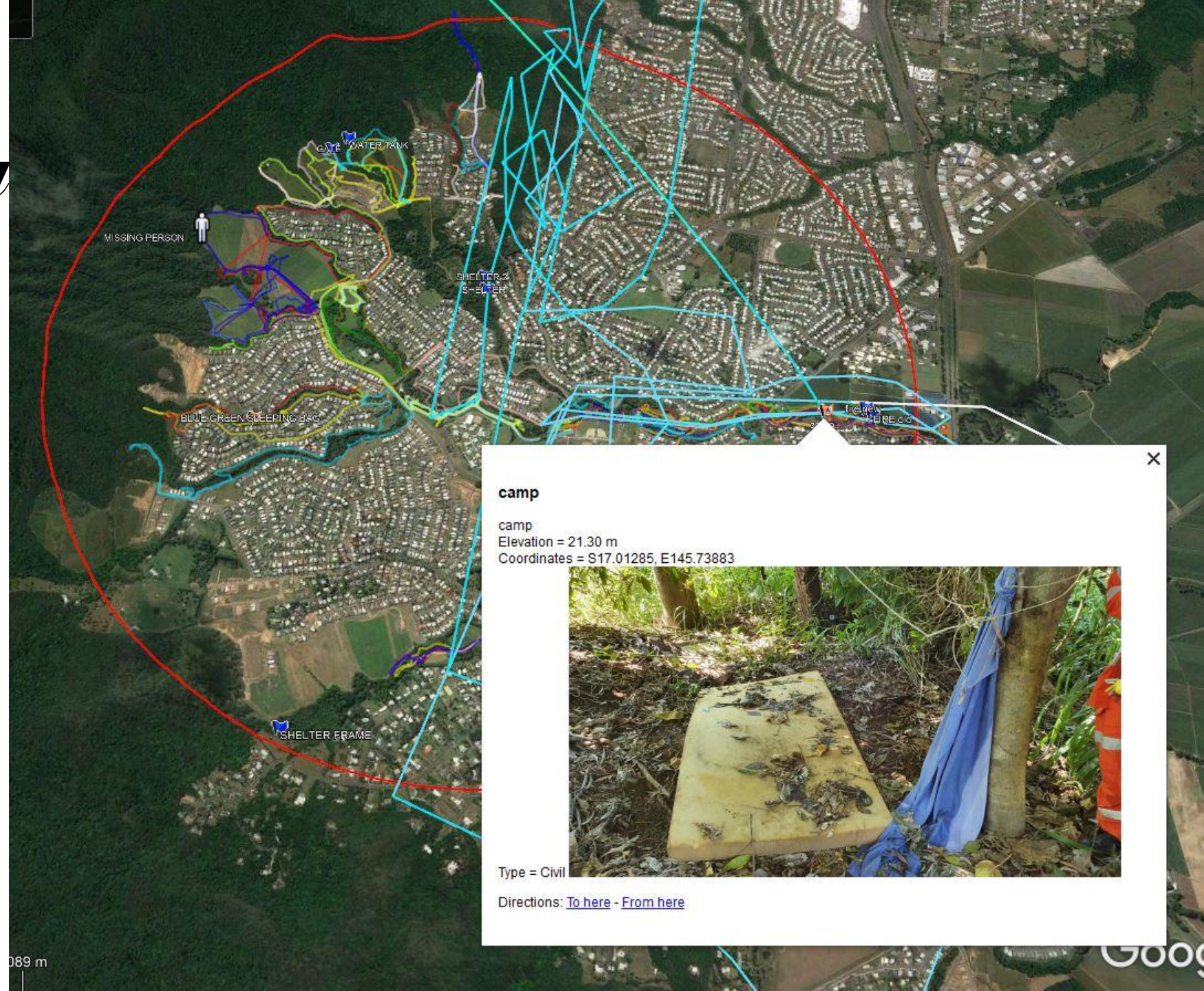
MT S 4



Directions: [To here](#) - [From here](#)

Fishery Falls

Light blue Rescue 510 tra



camp

camp

Elevation = 21.30 m

Coordinates = S17.01285, E145.73883

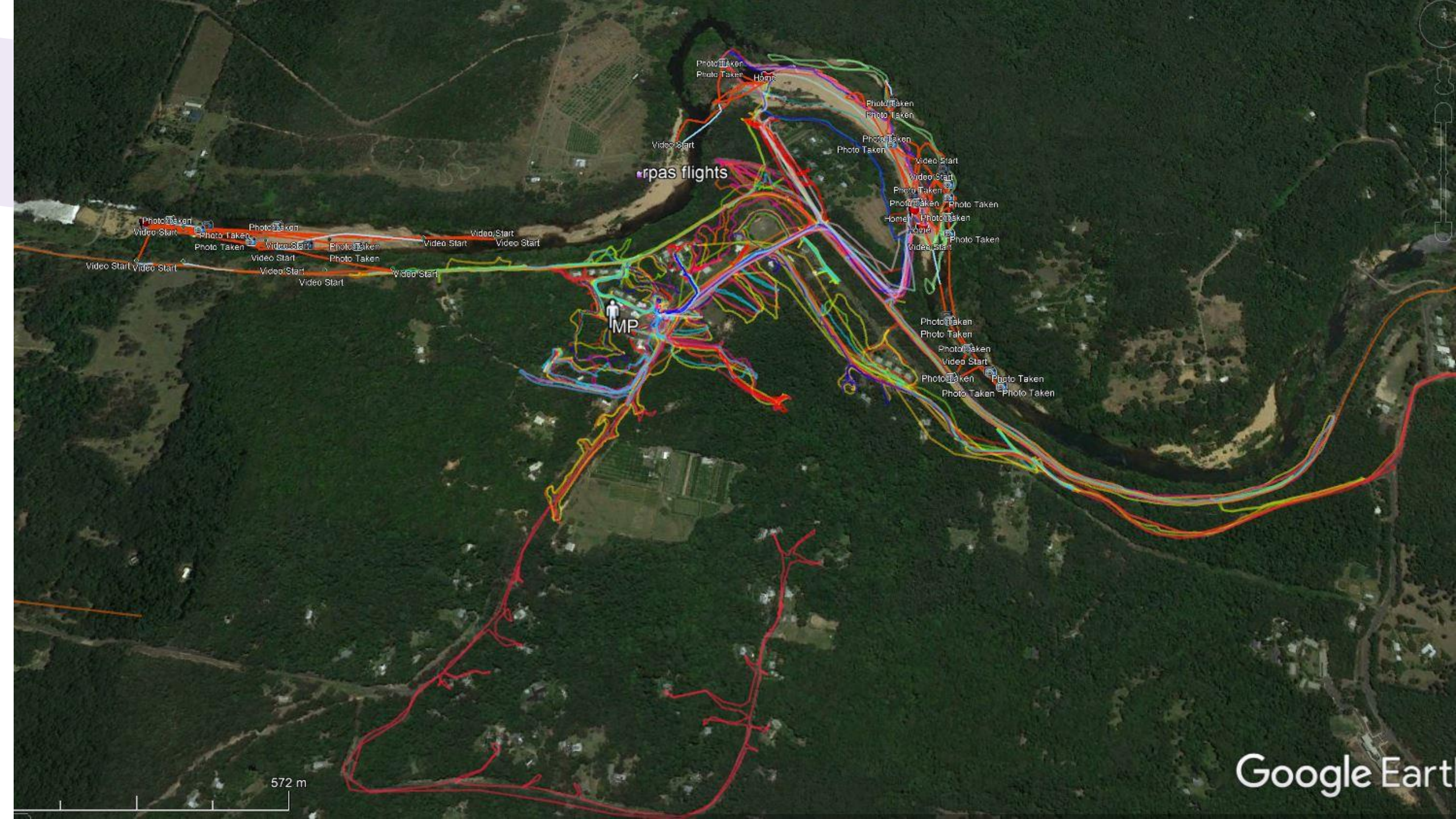


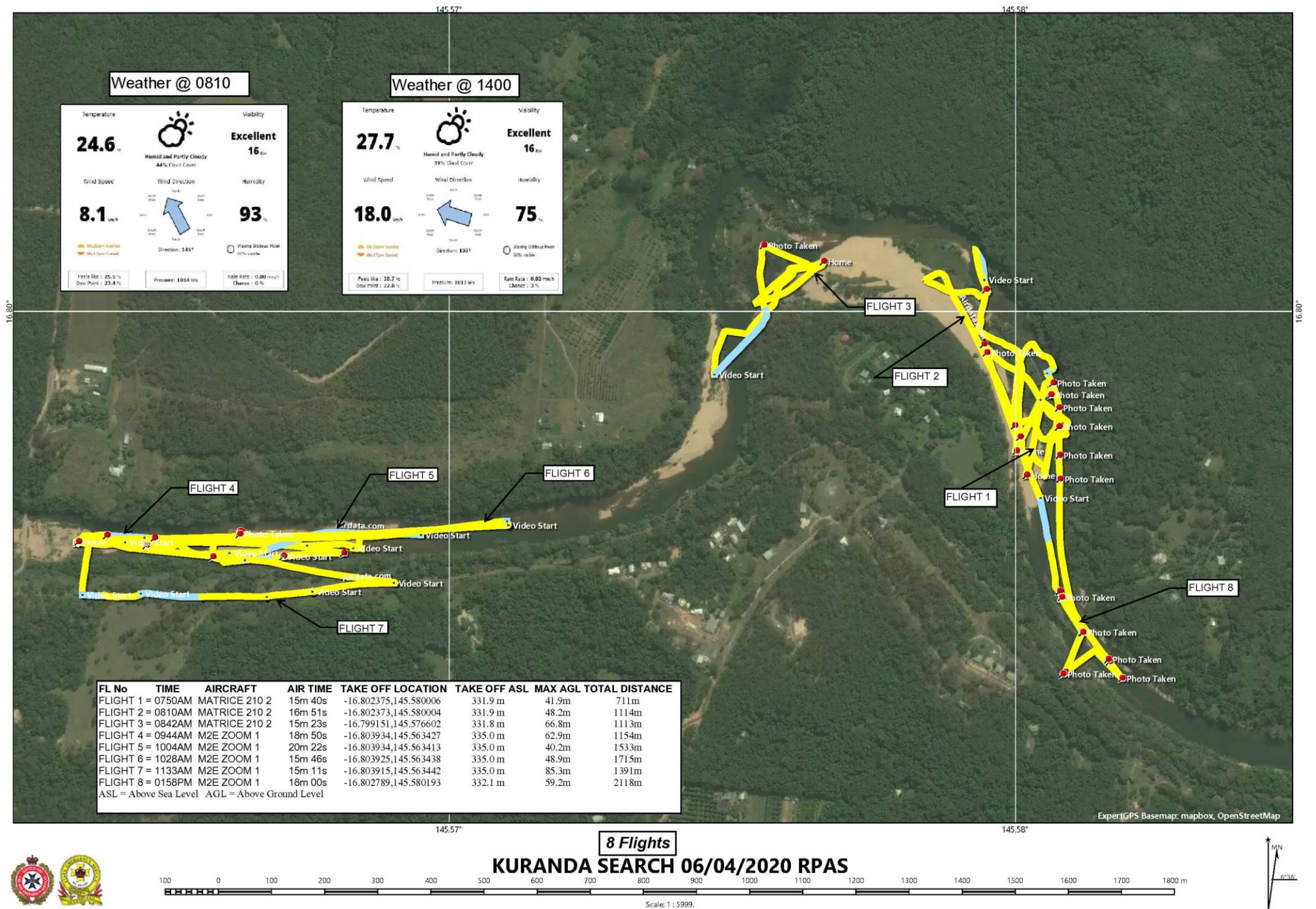
Type = Civil

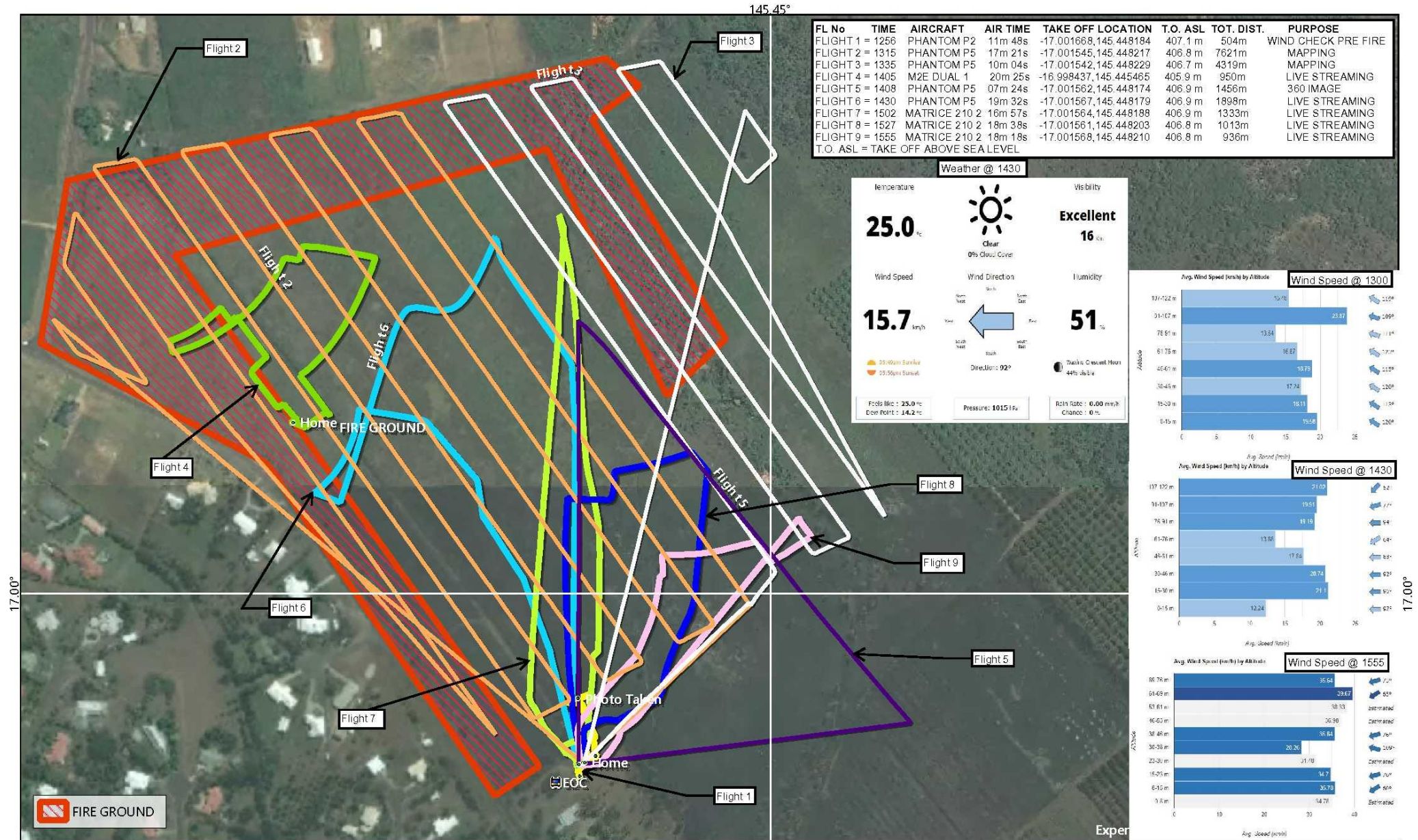
Directions: [To here](#) - [From here](#)

089 m

Google





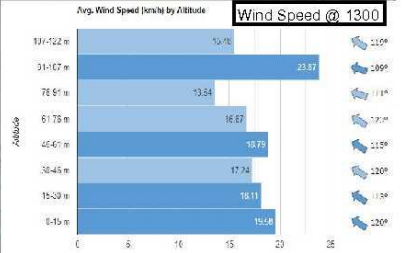


FL No	TIME	AIRCRAFT	AIR TIME	TAKE OFF LOCATION	T.O. ASL	TOT. DIST.	PURPOSE
FLIGHT 1	= 1256	PHANTOM P2	11m 48s	-17.001668,145.448184	407.1 m	504m	WIND CHECK PRE FIRE
FLIGHT 2	= 1315	PHANTOM P5	17m 21s	-17.001545,145.448217	406.8 m	7621m	MAPPING
FLIGHT 3	= 1335	PHANTOM P5	10m 04s	-17.001542,145.448229	406.7 m	4319m	MAPPING
FLIGHT 4	= 1405	M2E DUAL 1	20m 25s	-16.998437,145.445465	405.9 m	950m	LIVE STREAMING
FLIGHT 5	= 1408	PHANTOM P5	07m 24s	-17.001562,145.448174	406.9 m	1456m	360 IMAGE
FLIGHT 6	= 1430	PHANTOM P5	19m 32s	-17.001567,145.448179	406.9 m	1898m	LIVE STREAMING
FLIGHT 7	= 1502	MATRICE 210 2	16m 57s	-17.001564,145.448188	406.9 m	1333m	LIVE STREAMING
FLIGHT 8	= 1527	MATRICE 210 2	18m 38s	-17.001561,145.448203	406.8 m	1013m	LIVE STREAMING
FLIGHT 9	= 1555	MATRICE 210 2	18m 19s	-17.001568,145.448210	406.8 m	936m	LIVE STREAMING
T.O. ASL = TAKE OFF ABOVE SEA LEVEL							

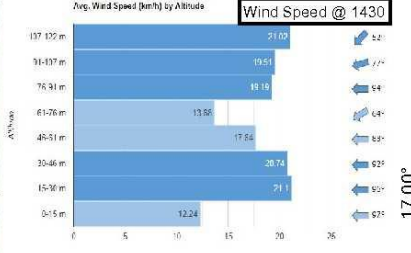
Weather @ 1430



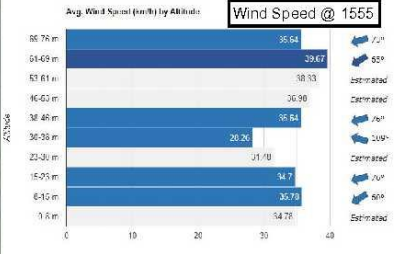
Wind Speed @ 1300



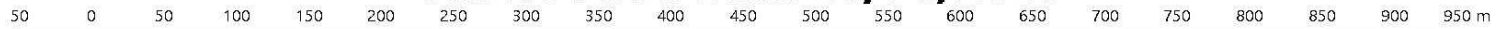
Wind Speed @ 1430



Wind Speed @ 1555

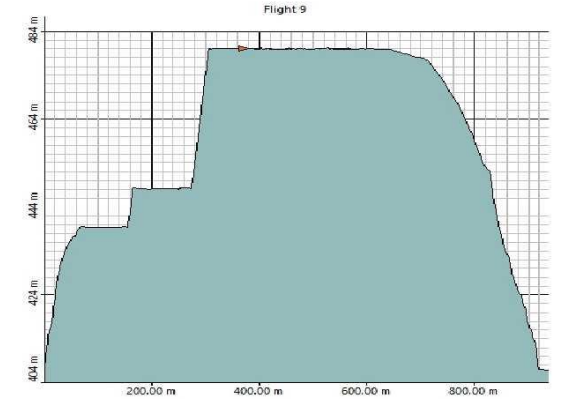
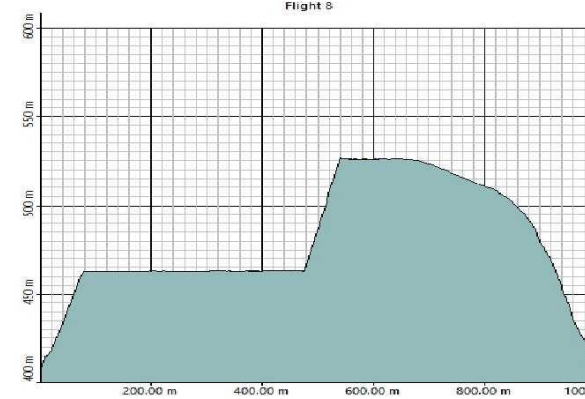
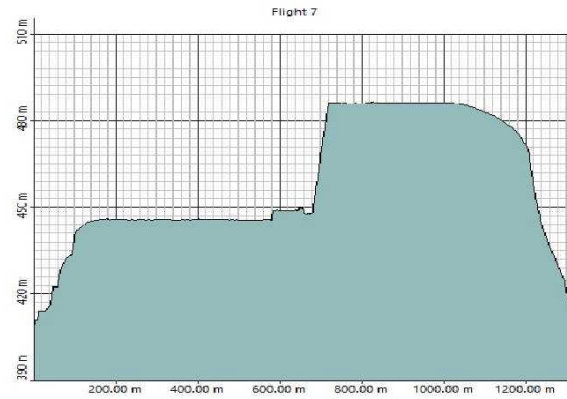
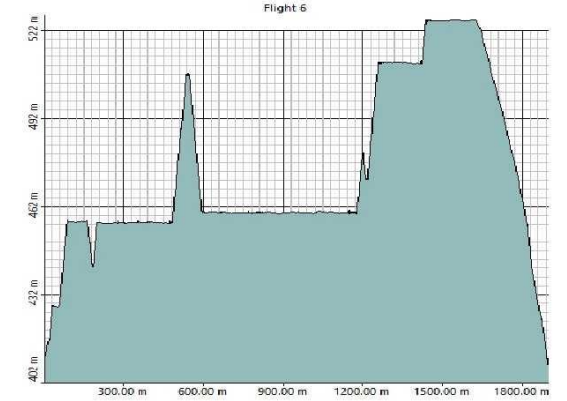
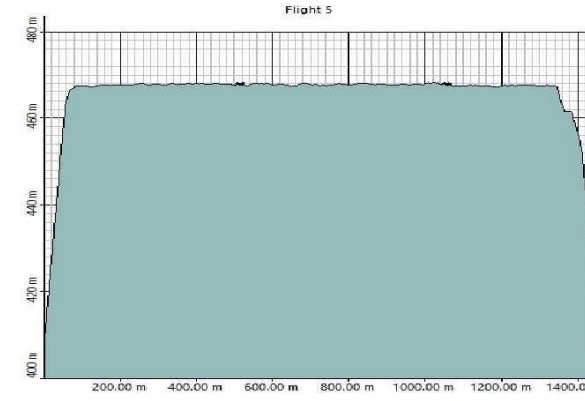
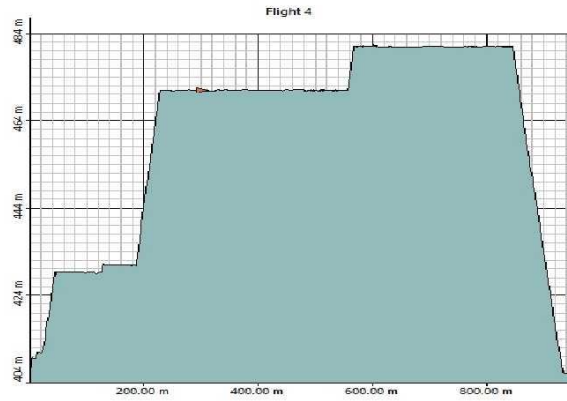
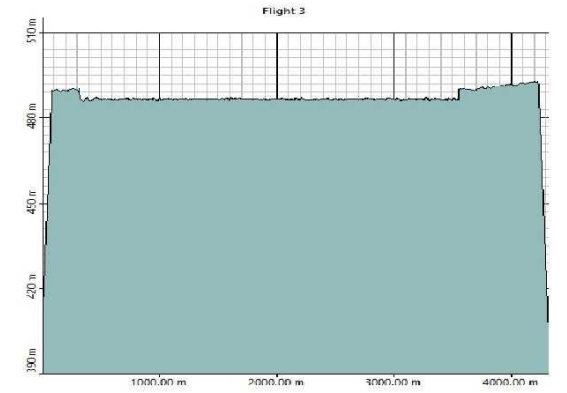
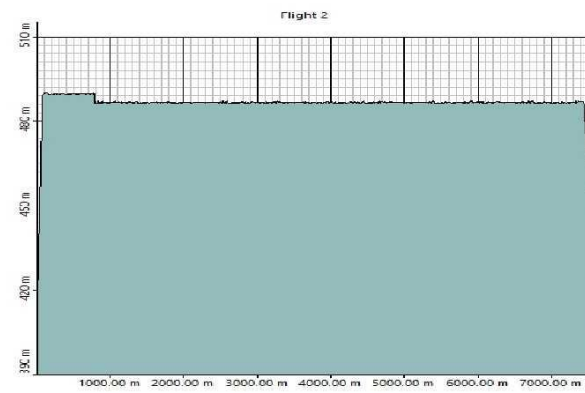
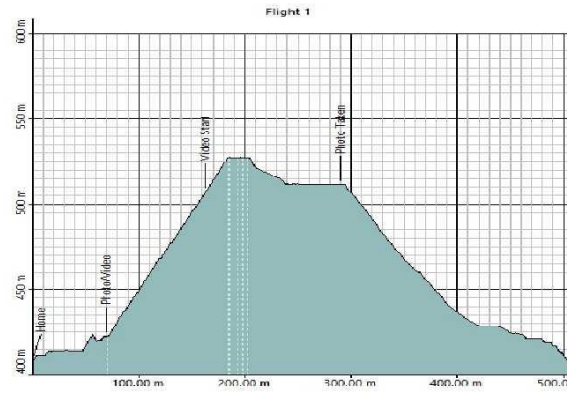


9 FLIGHTS Hastie Road Burn 27/06/2020



Scale: 1 : 5000.





FLIGHT PROFILES **Hastie Road Burn 27/06/2020**



DJI_0084.JPG



(S17.148381, E145.397794)

2020:09:30 10:57:50

1/500 sec at f/5.6. ISO 100. Focal Length: 8.8 mm

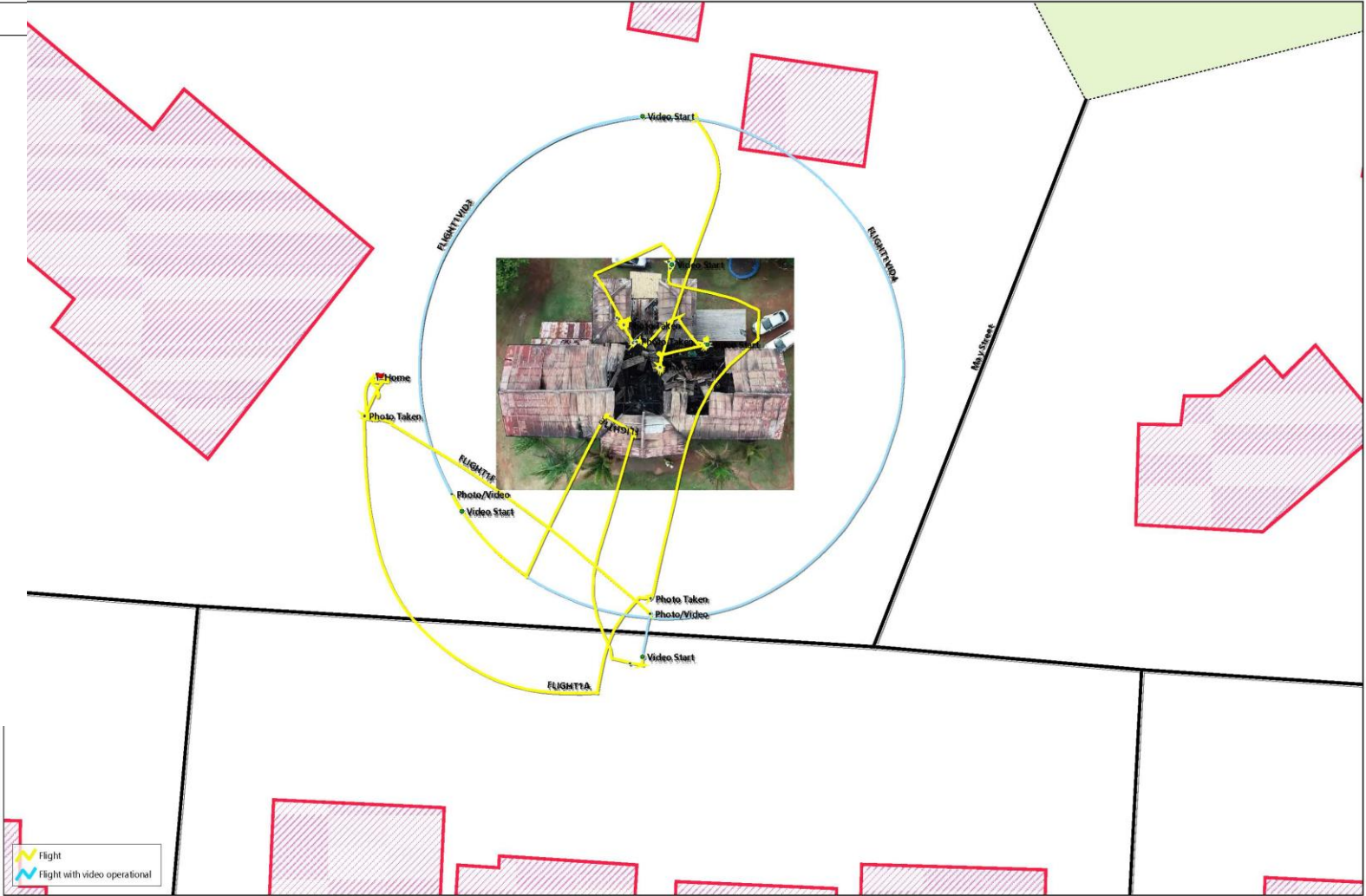
Directions: [To here](#) - [From here](#)

© 2020 Google
Image © 2020 CNES / Airbus

Google Earth

Images Date: 7/14/2010 17010'44.88" S 145022'20.21" E elev: 942 m eye alt: 12.01 km

Label	Type	Name on GPS	Latitude	Longitude	Description	Elevation
Video Start	vid	Video Start	S17.27213	E145.47772	20200809_140000000_ios.mov	791.40 m
Video Start	vid	Video Start	S17.27220	E145.47775	20200809_140306000_ios.mov	791.20 m
Video Start	vid	Video Start	S17.27200	E145.47769	20200809_135039000_ios.mov	812.10 m
Video Start	vid	Video Start	S17.27235	E145.47751	20200809_135607000_ios.mov	812.30 m
Video Start	vid	Video Start	S17.27248	E145.47768	20200809_070101239_ios.mov	814.10 m
Photo/Video	pic	Photo/Video	S17.27234	E145.47750		814.70 m
Photo/Video	pic	Photo/Video	S17.27245	E145.47769		814.70 m
Photo Taken	pic	Photo Taken	S17.27226	E145.47741	20200809_034733000_iOS.jpg	813.40 m
Photo Taken	pic	Photo Taken	S17.27243	E145.47769	20200809_034838000_iOS.jpg	805.10 m
Photo Taken	pic	Photo Taken	S17.27213	E145.47771	20200809_034946000_iOS.jpg	795.80 m
Photo Taken	pic	Photo Taken	S17.27214	E145.47771	20200809_035010000_iOS.jpg	791.50 m
Photo Taken	pic	Photo Taken	S17.27218	E145.47766	20200809_035146000_iOS.jpg	792.40 m
Photo Taken	pic	Photo Taken	S17.27219	E145.47767	20200809_035318000_iOS.jpg	791.60 m
Photo Taken	pic	Photo Taken	S17.27220	E145.47768	20200809_035447000_iOS.jpg	789.90 m
Photo Taken	pic	Photo Taken	S17.27220	E145.47768	20200809_035451000_iOS.jpg	789.90 m
Photo Taken	pic	Photo Taken	S17.27220	E145.47768	20200809_035458000_iOS.jpg	789.90 m
Photo Taken	pic	Photo Taken	S17.27220	E145.47768	20200809_035504000_iOS.jpg	789.90 m
Photo Taken	pic	Photo Taken	S17.27220	E145.47775	20200809_035539000_iOS.jpg	791.20 m
Photo Taken	pic	Photo Taken	S17.27220	E145.47775	20200809_035555000_iOS.jpg	791.20 m
Photo Taken	pic	Photo Taken	S17.27220	E145.47775	20200809_035611000_iOS.jpg	791.20 m
Photo Taken	pic	Photo Taken	S17.27223	E145.47770	20200809_035745000_iOS.jpg	812.40 m
Photo Taken	pic	Photo Taken	S17.27222	E145.47770	20200809_035856000_iOS.jpg	812.10 m
Photo Taken	pic	Photo Taken	S17.27249	E145.47767	20200809_040300000_iOS.jpg	814.30 m
Home	home	Home	S17.27223	E145.47743		780.30 m



ATHERTON FIRE 090820 flight1



This Includes a little of GIS in SES

