



Letter from the Chair

Welcome to the August 2013 edition of the Fungis Newsletter.

I must start this message by acknowledging the great Fungis Annual Conference in June, where Fungis celebrated 25 years of sharing spatial knowledge. There was an amazing program, great exhibition and more than a few laughs between members past and present as some presenters reviewed the history of GIS, Fungis and the members of our illustrious community. Particularly memorable for me was the great dinner talk by Raymond DeLai from HRIC - I'll never look at a fish the same way again! The laughs at this event reinforced the fact that we do indeed manage to keep the FUN in Fungis!

During the conference, Fungis awarded a Fungis Life Membership to our current Deputy Chair and Treasurer, Les Searle, who has been supportive of Fungis almost since it began. Congratulations Les for well-earned recognition of your constant support, guidance and hard work to ensure the Far North spatial industry continues to prosper. Inside the newsletter, Trevor goes into a detailed review of the event, so I will conclude my references to this year's conference by thanking the organising committee, especially Sharlene and Leigh who did an amazing job of coordinating all the different elements of this Conference and George's constant efforts with the website and the android app. just for the Conference.

I'd like to thank everyone who has volunteered (or been volunteered) for a role on the Fungis management committee for 2013/14. This is very important to maintain delivery of services and value to you, the membership. The Management committee cannot do it all though. Beyond all of the 'corporate overhead' of keeping the website up and the doors open, there are oodles of opportunities for non-executive members to contribute to our spatial ecology. Specifically, we are always on the lookout for helpers with various events and workshops, and really appreciate it if you send through stuff to share with everyone else in our Fungis newsletters. We're aiming to keep these newsletters short and regular so even little tid-bits on your latest project or brief reviews on the latest software/hardware tools you've used is welcomed by your peers.

LiDAR Technologies 2013 is now only 2 weeks away and is promising to be nearly twice as big as last year with heaps of people flying in from around the globe to join us. With parallel workshop and presentation sessions and 15 exhibitors, there is something for everyone. This year the event is excellent value at \$400 for Fungis members for the 2 days, including networking drinks/canapés and Dinner on day one, and more

The editorial team needs your help in developing upcoming issues of this newsletter which we hope to deliver to you every quarter. Please send us any fun pictures and articles relating to your work in GIS. After all it is not all just in front of the computer! We need funny stories about what people think GIS is, hair loss incidents from dealing with software and inspirational and innovative projects that you are working on, have seen online or at conferences.

The Newsletter Team:

George Corea, Sera Lambe, Anne Stapledon and Louise Alsford

newsletter@fungis.org



drinks/canapés at the Closing Ceremony on day 2, there is plenty of time to pick peoples brains for the latest LiDAR ideas. Thanks to the generous support of our exhibitors, there are over \$1000 in prizes to give away at Closing Ceremony on day 2, including a 10" Samsung Galaxy 2 tablet loaded with mapping software, so you'd better hang around for the end!

In closing, I encourage you to take a look at the busy events calendar on the back page of the newsletter as this next few weeks offers heaps of learning opportunities for you up here in the Far North (and who wants to go South in winter?!)

See you at LiDAR Technologies 2013!
Alistair Hart

Meet the Exec

Chair & Private Enterprise Representative: Alistair Hart

Treasurer: Les Searle

Secretary: Anne Stapledon

SSSI Liaison Representative: Adella Edwards

State Government Representative: Melanie Smith

NRM Representatives: Trevor Parker & Kama Miller

Cultural Heritage Representative: Sera Lambe

Web Representatives: George Corea & Shashidhar Sunkari

Newsletter Representatives: George Corea, Sera Lambe and Anne Stapledon



Connor
9 hours ago · like

I want to invent a scratch and sniff map of the United States. Wisconsin smells like cheese, Florida smells like oranges, Washington smells like teen spirit, and most of the south smells like obesity and racism. Some scents might be more practical than others.

Like · Comment · Unfollow Post

Getting directions 10 years ago



The Oatmeal <http://theoatmeal.com>

How to get to my place



The Far North Queensland GIS Group Inc. turns silver into gold with another brilliant GIS conference for their 25th silver anniversary edition held in Cairns in June 2013. GIS professionals gathered spatially from all over the country to join the memorable conference themed “ground to cloud”. By no means was the event second best.

Each day started with wise and experienced words from keynote speakers Brett Bundock (ESRI) and Graeme Merrell (Google) who truly set the inspirational tone for each day. They emphasised that GIS is now mandatory for nearly all organisations. The conference was a packed house, including faces old and new. Delegates enjoyed speakers covering topics from our spatial grass roots to immersing us in the clouds with the direction of the spatial Industry. We heard from some of the Fungis founding members about the changes they have seen over the past 25 years. We also heard about where the spatial industry is headed with presenters from organisations such as CSIRO, Australian Wildfire Conservancy, ESRI, Atlas of Living Australia and AGTRIX all showing off their cutting edge work.



Some highlights on the first day, included Terry web from Australian Wildlife Conservancy speaking about how fire management influences mammal populations. Peter Brenton showed how the Atlas of Living Australia is being utilised for a variety of biodiversity work, analysis and data management. Robert Crossley from AGTRIX presented the cutting edge application of spatial technology to the sugarcane industry. Les Searle was awarded with Lifetime Membership for his outstanding work in the spatial profession and for the ongoing support of the local Far North spatial community through Fungis. Les and Bob both received a commemorative weather station as acknowledgement of their Life Membership. Highlights on the second day included Jade Fraser from Desert Channels Queensland who described how cloud computing has transformed how his organisation operates, Joann Resing from DAFF presented App security for smart phones together with dynamic maps and Greg Patterson from Canberra Institute of Technology, who gave us a lesson on FME. The list of informative presentations goes on....

Great networking opportunities were abundant over the whole 2 days with a few coldies sponsored by AGTRIX at the end of the first day (thanks Rob!). The networking opportunities continued at dinner with stand-up spatial act presenter Raymond Delai keeping the guests entertained with random support from other spatial enthusiasts.

The event finished in a fun way, learning about the spatial science with the entertaining and original 'Spatial Olympics' event organised by Fungis Life Member Bob Peever. Thanks Bob for all your energy in making this happen.

Thanks to sponsors AGTRIX, Telstra, ESRI Australia, GlobalPOS, C.R. Kennedy, Pitney Bowes Software and Designer Signs. You really added to the success of the event!



Great work Fungis for a gold performance on your silver anniversary. We look forward to the next event and the next 25 years! See you all again next year (if not sooner).

Written by Trevor Parker

ATGIS Collects Gong at GITA 2013 Excellence Awards

The Australian/New Zealand Division of the Geospatial Information Technology Association, the world's leading association in the geospatial technology field, met this week in Brisbane for their annual conference and awards dinner.

At the awards dinner, only two awards are conferred for the Australia/New Zealand region. These awards are the Dial Before You Dig award for the utility company with the best response to requests for information on their assets and the GITA ANZ Excellence Award for outstanding achievements by organisations using geospatial technologies.

GITA Australia & New Zealand Division introduced the Excellence Award Program in 1992.

The GITA Awards Program relies on experts in the field who inform the association of outstanding achievements by organisations using geospatial technologies. The Awards Committee comprises GITA (Aust & NZ) Past-Presidents and other invited industry experts, as and when required.

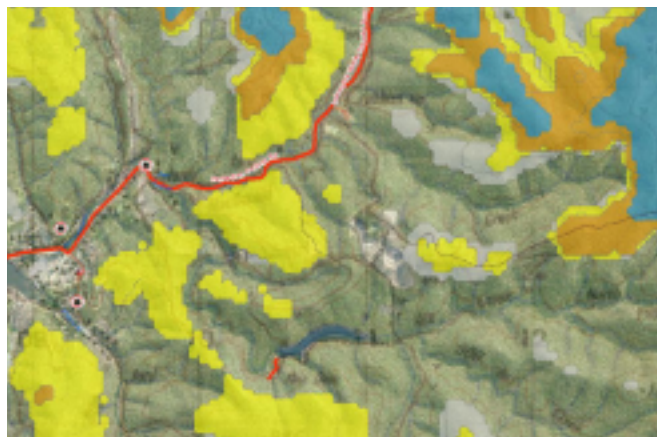
Atherton Tablelands GIS has joined a small group of organisations as winners of the prestigious GITA Excellence Award, in the face of stiff competition from very large firms, including one with 45,000 employees.

ATGIS won the award for their Disaster Resilient Communications Study project, which also involved collaboration with stakeholders in disaster management, local radio infrastructure network operators (including Qld Police, QFRS Rural Operations staff and volunteers, QPWS, Ergon Energy and Transport & Main Roads). The project also involved the Tablelands Radio and Electronics Club, a volunteer community group.

During the study, ATGIS modelled the radio coverage of over 35 different radio repeaters from the QPWS VHF, TRC UHF and UHF CB radio networks. This was a big undertaking as the analysis was undertaken with a resolution of 30 metres over huge areas, triggered by the complex topography and vast spread of the Tablelands Regional Council

The outcome of the project was that by modelling and proving that the QPWS VHF network was a viable replacement for telecommunications post-disaster, ATGIS saved Council over \$200,000 in planned expenditure on the expansion of its own radio network in order to determine the welfare of outlying communities post-disaster and brought about a prompt resolution to this long-standing issue.

ATGIS coordinator Alistair Hart noted the essential contribution of all the project partners in success and said "this project was a real collaborative effort and from the very successful field-trials undertaken with RFS volunteers has emerged to be an all-round community good news story".



For more information on GITA, head to: <http://www.gita.org.au/>



**Join some of the world's leading authorities on LiDAR
at LiDAR Technologies 2013, on August 22/23 in Cairns.**

**This is a unique opportunity to access cutting edge emerging technologies,
research, guidelines and processing tools, right on your doorstep.**

This is the biggest LiDAR event ever in Australia! The closest comparable event to this is in Denver USA, so save yourselves a few bucks and hop online now to download the amazing program and register at <http://tiny.cc/lidar2013>

Keynote speakers include:

- Lewis Graham, LiDAR Division Director, American Society for Photogrammetry and Remote Sensing
- Jorg Hacker, Airborne Research Australia
- Senator Jan McLucas, Minister for Human Services, Australian Government

Other major speakers include:

- Ramesh Sridharan, Virtual Geomatics (USA)
- Marin Isenburg, rapidlasso (Germany)
- Scott Carpenter, ROAMES, Ergon Energy (Aust)
- Nathan Quadros, CRC-SI, (Aust)

Exhibition: A huge exhibition is planned for this year and includes exhibitors of LiDAR hardware, software and processing services in addition to much more!

Registration: A two day rego includes the conference dinner and is only \$400 for Fungis members. Plan to stay for the Workshop closing ceremony and be in the running for over \$1000 of prizes, including a Samsung Galaxy S2 10" Tablet PS, loaded with mapping software.

Please contact: Kellie from SSSI Qld at pd.qld@sssi.org.au or ph. 3217 2566 with any questions.

LiDAR Technologies 2013 is proudly co-hosted by [Fungis](#) and [SSSI](#)

LiDAR Technologies 2013 Gold Sponsor is [C.R. Kennedy](#)

Pitney Bowes Software is running MapInfo related training courses in Cairns this September and November.



Level I - MapInfo Professional

This introductory level course defines the concept of a Geographic Information System (GIS) and provides trainees with an understanding of MapInfo functionality that will enable creation of maps and analysis of data in a spatial context. The course also includes several self-paced problem-solving exercises that are designed to reinforce the various topics and features covered.

Course Dates: **17th – 18th Sep** and **12th – 13th Nov**

Duration: **2 days**

Level II - Geographic Analysis & Presentation

Discover techniques that are invaluable for analysis such as Thematic, Bivariate Thematic Mapping and Advanced SQL. Create reusable templates for your presentations and learn techniques used for better layouts.

Course Dates: **19th – 20th Sep**

Duration: **2 days**

Level II - Map Creation & Data Management course

Covering topics that will allow the user more control of the functionality that lies behind MapInfo Professional. Have MapInfo Professional automatically clean your data, both tabular and spatial.

Course Dates: **14th – 15th Nov**

Duration: **2 days**

For more information, please contact Pablo Villegas at Pitney Bowes Software on (07) 3226 4553 or 0433 942 033.

Cartography and Map Design Workshop

Do you know your grid from your graticule?

Anyone can make a map these days, but with a little guidance and practice we can make your maps stand out from the crowd. It doesn't matter how good the data, or how robust the analysis, a bad map will always let the side down.

An effective map portrays a place, delivers a message, or reveals a pattern with representational accuracy and visual clarity. The test of accuracy and clarity is how well the audience perceives the map and understands the purpose.

As map makers it is up to us to create clear, effective and accurate maps for all kinds of audiences and purposes. This is an art which can take years to master, but the Cartography and Map Design workshop will give you a good foundation, or enable you to brush up on any rusty skills.

As part of the one day workshop you will cover:

- *The Cartographic Process
- *Map Fundamentals, including Coordinate Systems, Projections and Datums
- *Map Data
- *Making the Map

The content will combine presentations from experts in the area with hands on group exercises, and even a quiz to test your knowledge!

Sponsorship opportunities exist for this event - please contact pd.qld@sssi.org.au





Scantherma

Introduction to Remote Sensing for Geologists

Dates: 28th and 29th of August, 2013 (2 days)

Venue: The Pacific Conference and Events Centre

Pacific International Hotel,
Cnr The Esplanade & Spence St, Cairns, QLD

Perfect for:

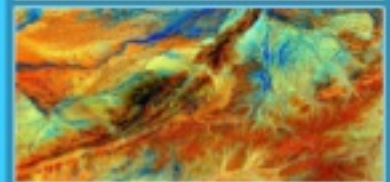
- Geologists
- Environmental Scientists
- GIS Professionals
- Project Managers
- Exploration Managers
- Cartographers

You will learn:

- ...about all types of satellite imagery,
- which software to use,
- ways to help your mineral exploration programs,
- how to order the right datasets for your project.
- **Find your next big target!**

Course Outline:

- Basics of Electro-magnetic Radiation
- Satellite Imagery vs Aerial Imagery
- NDVI Image Processing
- Natural / False Colour Composite Imagery
- Comparing High Resolution Satellites
- Using ASTER Imagery for Geological Discrimination
- Band Ratios – Importance and Application using ASTER Imagery
- Using Filters in Processing RADAR Imagery
- Working with SRTM and ASTER GDEM Data
- Image Fusion and Importance in Geological Mapping



Course Cost:
\$1800 ex GST

Book through ATGIS



Terms & Conditions

- Fully Catered.
- Bring your own laptop.
- Free demo copy of ER Mapper will be provided.
- **Strictly Limited Numbers.**

Atherton
Tablelands

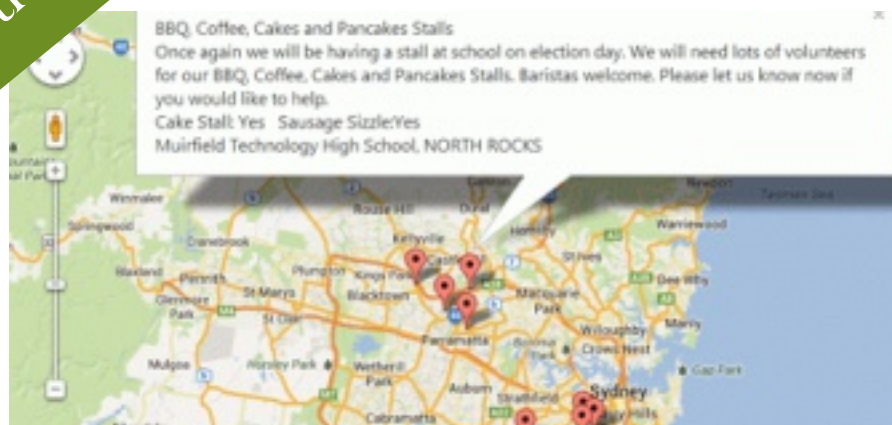
G.I.S.

Call ATGIS on (07) 4091 8600

Email at info@atgis.com.au

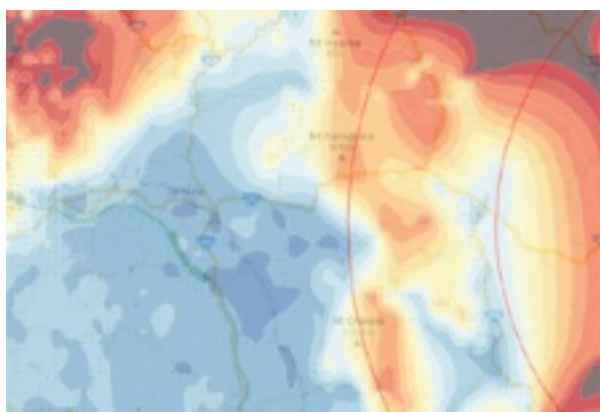
www.atgis.com.au

Q: Why do paper maps never win at poker?
A: Because they always fold.



The **2013 Election Sausage Sizzle Map** shows the locations of sausage sizzle and cake stalls that will be operating on 7 September 2013, which is federal election day. If your stall is missing from the map don't despair as you can slap your sizzling sausage on the map by completing a short form.

www.electionsausagesizzle.com.au



Mapping Japan's Radiation Levels

The Institute for Information Design Japan has created a map that shows radiation readings from measurement devices across the country. The Japan Radiation Map displays over 2,500 radiation readings taken throughout Japan on a Google Map.

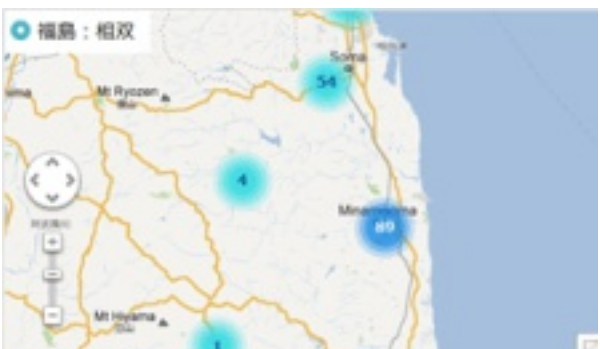
The markers for each measurement are color-coded to give an overview of where radiation levels in the country are at their highest. Users can mouse-over the individual markers to find the exact reading from each radiation monitoring device.

Safecast is working to build a radiation sensor network, comprised of static and mobile sensors deployed around Japan. The Safecast Maps page includes a number of Google Maps that have been built to help visualise the radiation data collected by the Safecast sensor network.

The Safecast Map itself depicts over 4,000,000 radiation data points collected by the Safecast team. It provides a heat map visualisation of radiation levels collected by the sensor network. The map includes options to view the data on top of different Google Maps styles and using map tiles from different online map providers.

The Ministry of Education, Culture, Sports, Science and Technology, Japan has released a real-time map of radiation measurements in Fukushima Prefecture. The Japan Radiation Monitoring Map uses Google Maps to show the radiation levels measured by monitors throughout the Fukushima Prefecture.

The measurements displayed on the map are updated every ten minutes. The map uses a marker clustering system to show how many radiation monitor measurements are available at different locations. If you click on a marker all the measurements from that point can be viewed in the map sidebar.



Above articles by Keor Clarke and sourced from: www.mapsmaniac.com; Google Maps Mania is an unofficial Google Maps blog tracking the websites, mashups and tools being influenced by Google Maps.

August 21st

SSSI Cartography Workshop

August 22nd-24th

LiDAR 2013

August 28-29th

Introduction to Remote Sensing for Geologists

September 17-18th

Pitney Bowes Mapinfo Training



Alistair Hart and George Corea from ATGIS accepting the GITA Australia and New Zealand 2013 Excellence Award from GITA President, Antoine Burdett on August 6th, at the Mantra Hotel, South Bank Brisbane.

See article inside for details.



QCON14

REPOSITIONING FOR A SUSTAINABLE FUTURE

7-10.10.2014

-16.927,145.778

tiny.cc/qcon14

